



My Start Menu

Contents

Thank you	4
Part 1 Introduction	5
1 Description.....	6
2 Benefits.....	7
3 Features.....	8
4 Screenshots.....	10
5 System Requirements.....	12
Part 2 Purchasing / Support	13
1 Buy	14
2 Support.....	15
3 Producer.....	16
Part 3 Operating Instructions	17
1 Installation.....	18
2 Start Program.....	19
3 Settings.....	20
General Settings	21
Objects	23
Window Activation	24
4 Operation.....	25
Toolbar	27
Menu Management	29
First steps	32
5 Update	36
Part 4 License Agreement	37
Index	39

Thank you

Thank you very much for using My Start Menu.

***"Everything should be as simple
as it is, but not simpler."***

Albert Einstein

1 Introduction



My Start Menu

Simply Open Programs And Documents,
Clearly Arranged And Without Many Mouse Clicks.

Version 1.2x

www.infonautics-software.ch/mystartmenu

© Infonautics GmbH, Switzerland

1.1 Description

Fast and flexible alternative to Windows start menu

Are you looking for a Windows Start Menu replacement? With the start menu **My Start Menu** you save much time and are able to work more efficiently in your **daily routine with Windows**.

The start menu My Start Menu combines all valuable feature of a customizable start menu with the **familiar user interface of Windows Explorer**. Once installed, you do not want to miss this helpful tool anymore.

Create your **personal start menu for Windows** and have immediate access to your recently used applications and documents with a single click only.

Save yourself laborious navigating through the Windows Start Menu structure in order to start the requested application.

The consistent user experience and the **permanent presence of the window of My Start Menu** allow a simpler, faster and more comfortable use of your PC.

Are you searching an application or a certain document? Take advantage of the **fast search function** for searching within all menu folders and the recently opened documents.

Create **your personal menu structure** with your preferred and most useful menu folders. My Start Menu does not require any administration rights for installation. The default Windows start menu will not be modified.

My Start Menu runs on all Windows versions (XP or higher) and is available for download in the languages English, German and French.

My Start Menu can be tested **30 days free of charge**. When installing the software no modifications to your operating system will be made. In case the software does not meet your expectations it can easily be uninstalled again.

The costs for a full version are about CHF / EUR / USD 24 for a single license (depending on exchange rate). Additionally, there is a business license for up to 10 PCs within the same company available as well as a corporate license for an unlimited number of installations within the licensed company. The license is non-expiring and valid for all future updates.

1.2 Benefits

My Start Menu allows you to create your personal Windows start menu and have immediate access to your recently used applications and documents with one single click only. Save yourself laborious navigating through the Windows menu structure in order to start the requested application. The Windows start menu **My Start Menu** starts automatically with Windows and remains active on the desktop for fast access. The default Windows start menu will not be modified.

- **Personal Windows start menu** including a most useful menu structure according to your needs.
- **User interface similar to the familiar Windows Explorer.**
- **Instant access** to applications and documents.
- **No tedious clicking** through nested folders in order to start applications or to open documents.
- **Labour-saving tool** providing automatically updated lists of the "Recently Started Objects" and "Recently Opened Documents".
- **Simple menu enhancements** by Drag & Drop or via the Shortcut Wizard.
- **Fast search function** available for all menus (My Own menu and Windows Menu) and "Recently Opened Documents".
- **Additional bookmark list** for even faster access to applications and documents or as a temporary storage location when creating the menu folders.
- **Clear display** of objects with large icons or as a list with small icons.
- **Direct access to important system functions** via permanent visible icons.
- **Simple installation** of the software on your Windows™-PC (Windows XP or higher).
- **Suitable for any PC user**, due to the intuitive interface for beginners and experts alike.
- **Extensive help system**, also available as printable manual in PDF format.
- **Free support by email**, your questions will be answered within 48 hours in English and German.

1.3 Features

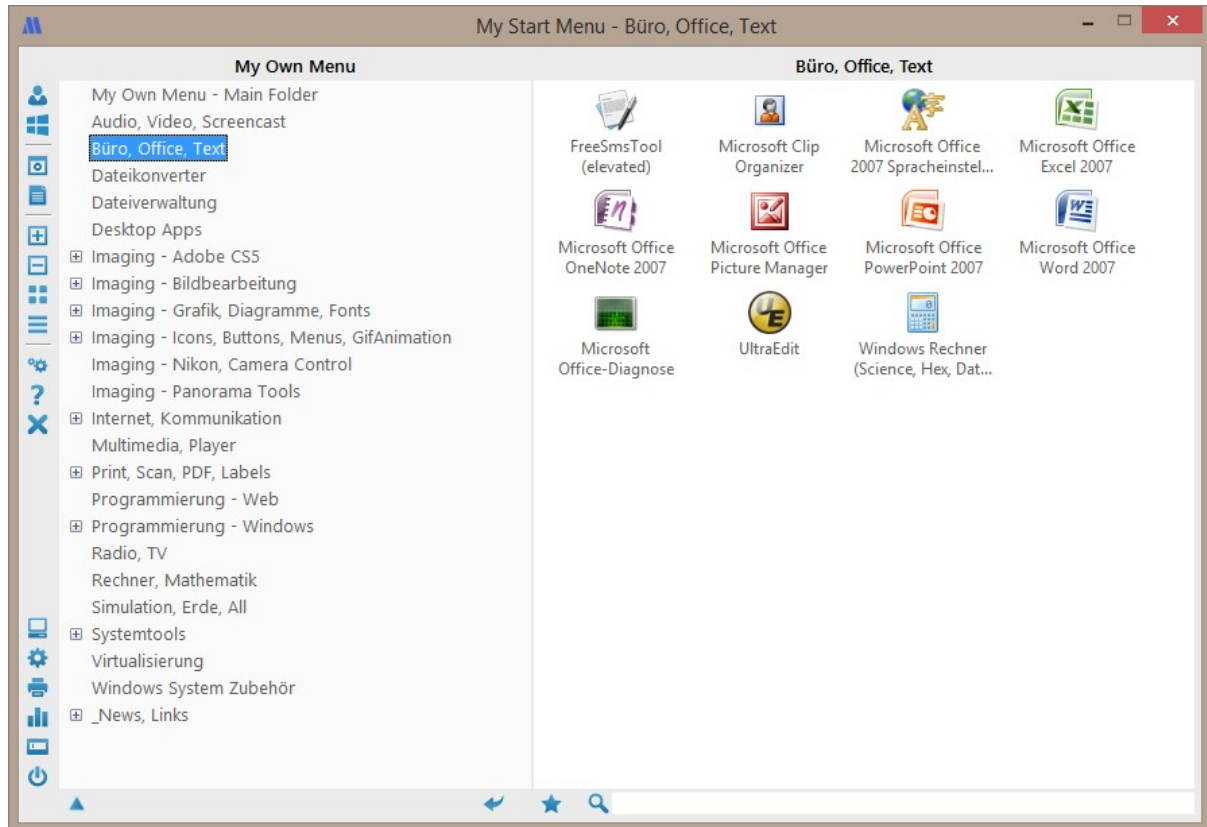
The start menu replacement **My Start Menu** for Microsoft Windows™ enables you to start and open applications and documents faster. The user interface is similar to the familiar Windows Explorer. Once an object has been started the open menu folders remain open. New programs and other objects can simply be added by drag & drop or via the shortcut wizard. Various system functions such as Windows Explorer and Control Panel can be opened directly via corresponding icons. In addition, a search function and a bookmark list as well as the lists of recently launched programs and of recently opened documents enable an even faster access to the programs and documents. With the easy user interface and the permanent presence of the window of My Start Menu the operation of your PC is much easier, faster and can be much better customized according to your needs. The default Windows start menu will not be modified.

- **User interface similar to the familiar Windows Explorer.**
- **Instant access to the linked objects** such as applications, documents, folders, drives, websites.
- **Area 'My Own Menu'** with its own menu structure and own links to the objects.
- **Area 'Windows Start Menu'** showing the original menu structure of Windows start menu.
- **Possibility to easily add objects to your personal start menu** by Drag & Drop, copy/paste or via Shortcut Wizard.
- **Automatic creation of correct links** to programs, documents, files, folders, drives, network drives and Internet addresses.
- **Display of the 'Recently Started Objects'** (hold-back time adjustable).
- **Display of the 'Recently Opened Documents'** (erasable).
- **Quick search** within all menu folders and Recently Opened Documents (adjustable).
- **Separate bookmarks** of objects and documents for an even faster access.
- **Direct access to system functions** such as Windows Explorer, Control Panel, Printers, Task Manager, Run, Shutdown.
- Activation of the program window by an icon pinned to the taskbar or by a desktop icon.
- Activation of the program window by mouse movement (mouse gesture).
- Area 'My Own Menu' can be assigned to a self-defined directory.
- Display of objects as large icons or as a list with small icons.
- Fast opening and closing of all menu folders.

- Installable with installer or as a single application file without installation.
- Documentation and free email support in English and German.
- Can be started automatically with Windows®.

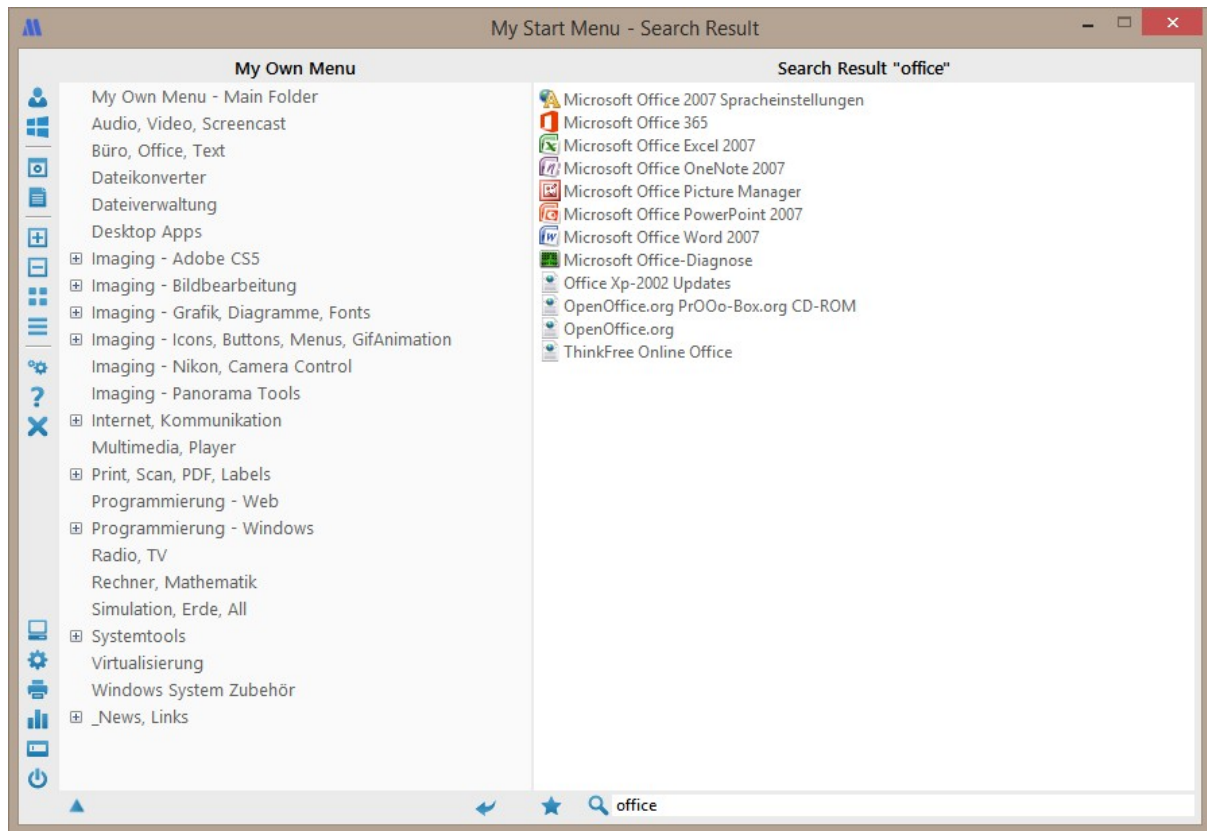
1.4 Screenshots

View with open program group



The buttons on the left edge of the window control the options of My Start Menu and launch important functions of Windows. See [Operating Instructions](#)^[17].

View after a search has been carried out



The search for "office" lists all objects found in all menus containing "office" in their names, regardless of uppercase / lowercase.

1.5 System Requirements

Operating System: Microsoft Windows® 7 / 8 / 10 / 11 (different versions for 32bit and 64bit are installed automatically)

Main Memory RAM: about 5 MB

Disk Space for Program: about 10 MB

2 Purchasing / Support

The software **My Start Menu** has been developed by Infonautics GmbH Switzerland and is distributed as Shareware with a free trial period of 30 days. After the trial period a license key per PC/user has to be purchased for the regular use of the software.

During the trial period, as long as no valid license key has been entered, following restrictions of the software apply:

- A dialog box for entering the license key appears daily.

License Types

- **Single:** The software can be installed as single user license on 1 PC.
The license refers to the name of the user. For any further PC an additional license is required.
- **Business:** The software can be installed on up to 10 PCs within the same company.
The license refers to the name of the company.
- **Corporate:** Within the same company the program can be installed on an unlimited number of PCs.
The license refers to the name of the company.

For further information see: [Buy License](#)^[14]

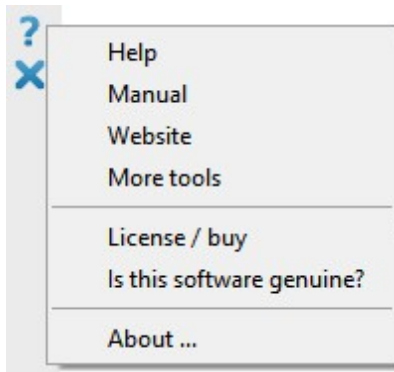
2.1 Buy

The program **My Start Menu** is Shareware and can be downloaded and tested for free during 30 days:

<http://www.infonautics-software.ch/mystartmenu>

For the regular use of the program a license key is needed which can be purchased directly online and will be forwarded by return email after purchase:

<http://www.infonautics-software.ch/mystartmenu/buy>



Copy the license key which has been forwarded by email into to appropriate field in the entry screen which can be opened in the menu Help ? under "License / Buy". Then restart the program.

For further information see: [Operating Instructions](#)^[17] / [Installation](#)^[18]

2.2 Support

Free Support for **My Start Menu** is available by email. Any questions will be answered within 48 hours in English and German:

mystartmenu@infonautics.ch

Any suggestions by you regarding new program features or possible criticism will be appreciated.

2.3 Producer

INFONAUTICS GmbH

Eichholzweg 16
CH-6312 Steinhausen
Schweiz / Switzerland

Phone +41 41 7431001
Fax +41 41 7431002

Homepage www.infonautics.ch
Email mystartmenu@infonautics.ch

INFONAUTICS GmbH was founded in 1995 and is based in Steinhausen / Switzerland. The core competences of the company are in the following fields:

- Software development
- Internet solutions
- Online booking systems
- Quality management software

Based on 20 years of experience in software development on many different operating systems the company is able to realize innovative and reliable solutions for the business of small and mid caps. Infonautics GmbH offers user-friendly, reasoned and successful solutions which can easily be integrated into already existing business transactions.

Our guidance motive reads accordingly:

Software solutions - Clever. Easy. Reliable.

3 Operating Instructions



My Start Menu

Operating Instructions

Version 1.2x

<http://www.infonautics-software.ch/mystartmenu>

© Infonautics GmbH, Switzerland

3.1 Installation

My Start Menu can be installed fast and easily.

According to your operating system (32 bit or 64 bit) the correct version will be installed automatically.


Installation

First download the latest installation file in your preferred language to your PC:

<http://www.infonautics-software.ch/mystartmenu>

Then start the installation program "MyMenuExplorerSetupEN.exe" and confirm all questions and indications positively. Thereupon, a new program group "My Start Menu" will be shown in the start menu.

When you start the installed program **My Start Menu** for the first time please verify your personal '[Settings](#)'^[20] according to the operating instructions.

 If the display of program groups with a lot of entries sporadically shows a slight delay, then this is due to the slow checking of the contained file shortcuts by the PC protection software, such as "Windows Defender". In this case, you can define an exception in the protection software so that the program (process) "MyStartMenu.exe" is no longer checked. This is perfectly safe as the programs and files to be opened are checked at startup anyway.

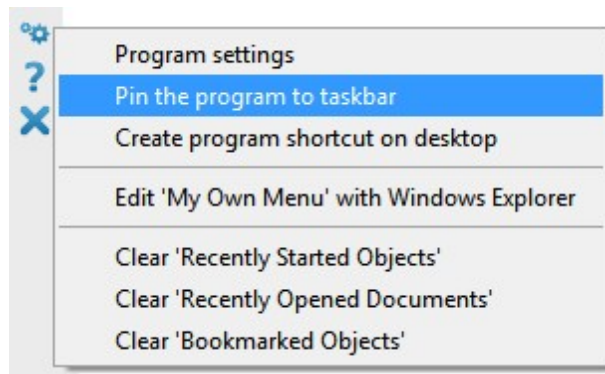
3.2 Start Program

Start the program **My Start Menu** for the first time from the program group "My Start Menu" in Windows start menu.

For the most part, the program automatically configures itself and creates a couple of program groups which shall serve as starting point for your personal menu structure.

Then, define your personal settings according to the next chapter in the [Settings](#)^[20]. Here, you can for example specify whether My Start Menu should automatically start with Windows.

⚠ It is recommended to **pin the program to the taskbar** (Windows 7 or higher) so that **My Start Menu is always available on the desktop**.



Click on the icon  in the window of My Start Menu and open the settings menu.


Choose the option "Pin the program to taskbar".

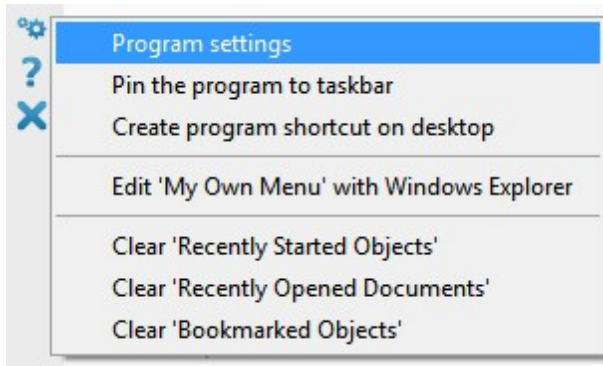
Afterwards, the software My Start Menu can always be started/opened from the Windows taskbar.



3.3 Settings

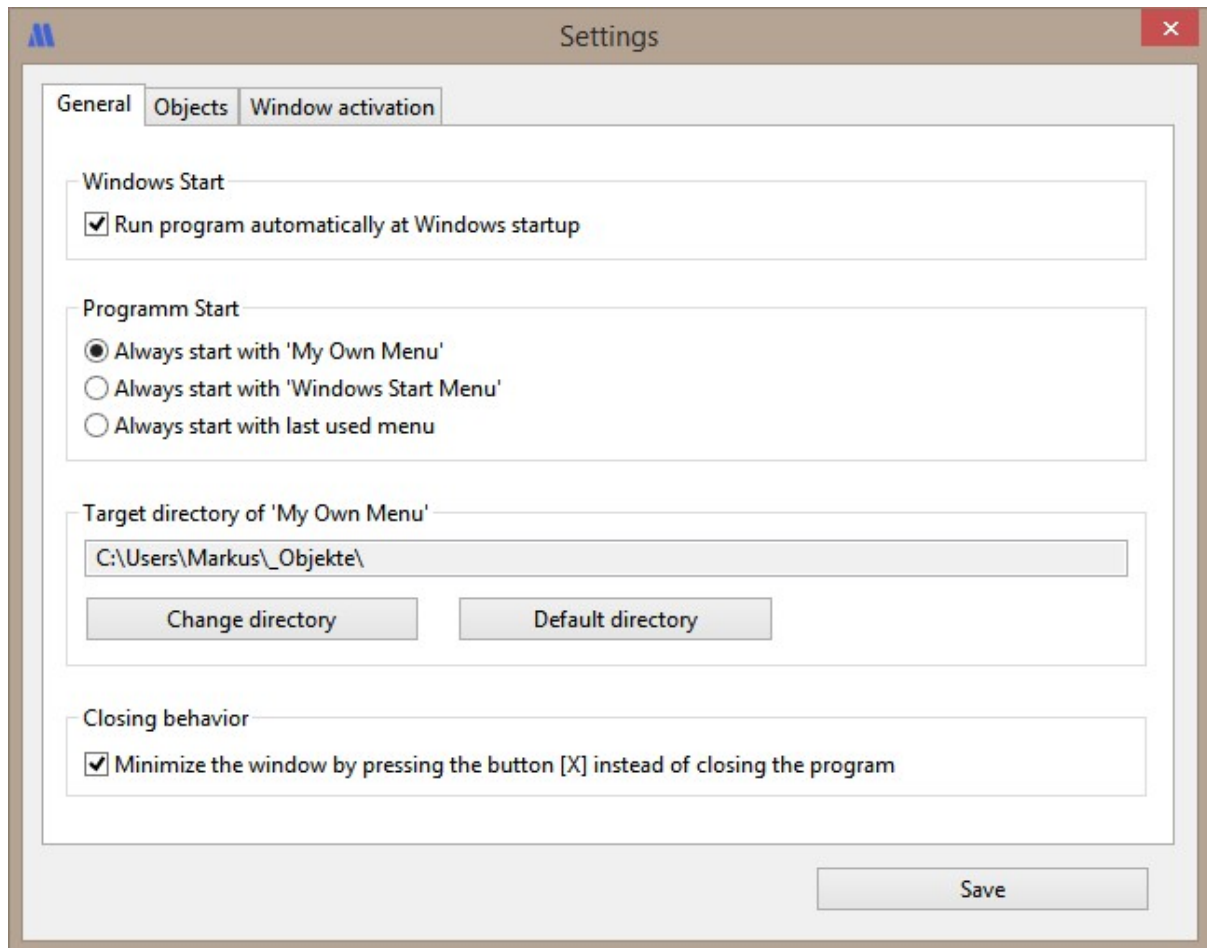
The personal **Settings** of the program **My Start Menu** are to be defined under "Settings".

In order to open the window "Program settings" click on the icon "Settings"  on the left side of the program window.



3.3.1 General Settings

The **General Settings** determine the general behavior of the program.



Start program automatically with Windows: The program My Start Menu starts automatically at Windows startup.


Always start with 'My Own Menu': When the program is started always the personally created menu is displayed.

Always start with 'Windows Start Menu': When the program is started always the menu provided by Windows is displayed.

Always start with last used menu: When the program is started the menu will be displayed which was the recently opened menu.

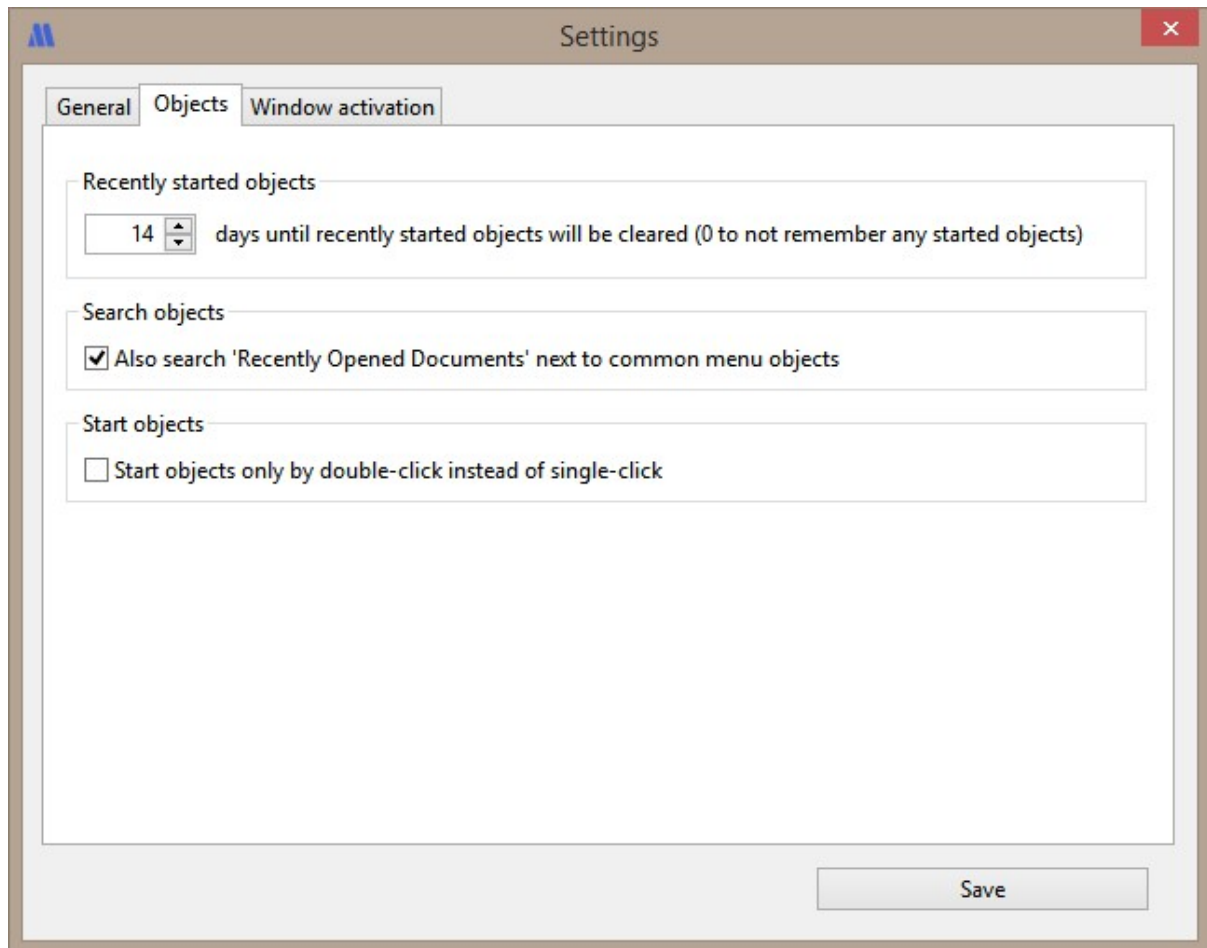
Target directory of 'My Own Menu': By default, a personal menu in your personal data directory will be created (Directory: %appdata%\MyStartMenu\MyMenu\). However, another

directory can be defined as base directory for your own menu.
(Example: C:\Users\Markus_Objects\)

Closing behavior: By default, each window/program can be closed via the cross in the top right of each window. This option specifies that the window/program will not be closed but only minimized to the taskbar. Thereby, the current selection in the menu window remains active. When this selection is enabled, My Start Menu can only be closed by clicking on the button "Exit"  on the left edge off the menu window.

3.3.2 Objects

The **object settings** determine the behavior of the menu objects (shortcuts).



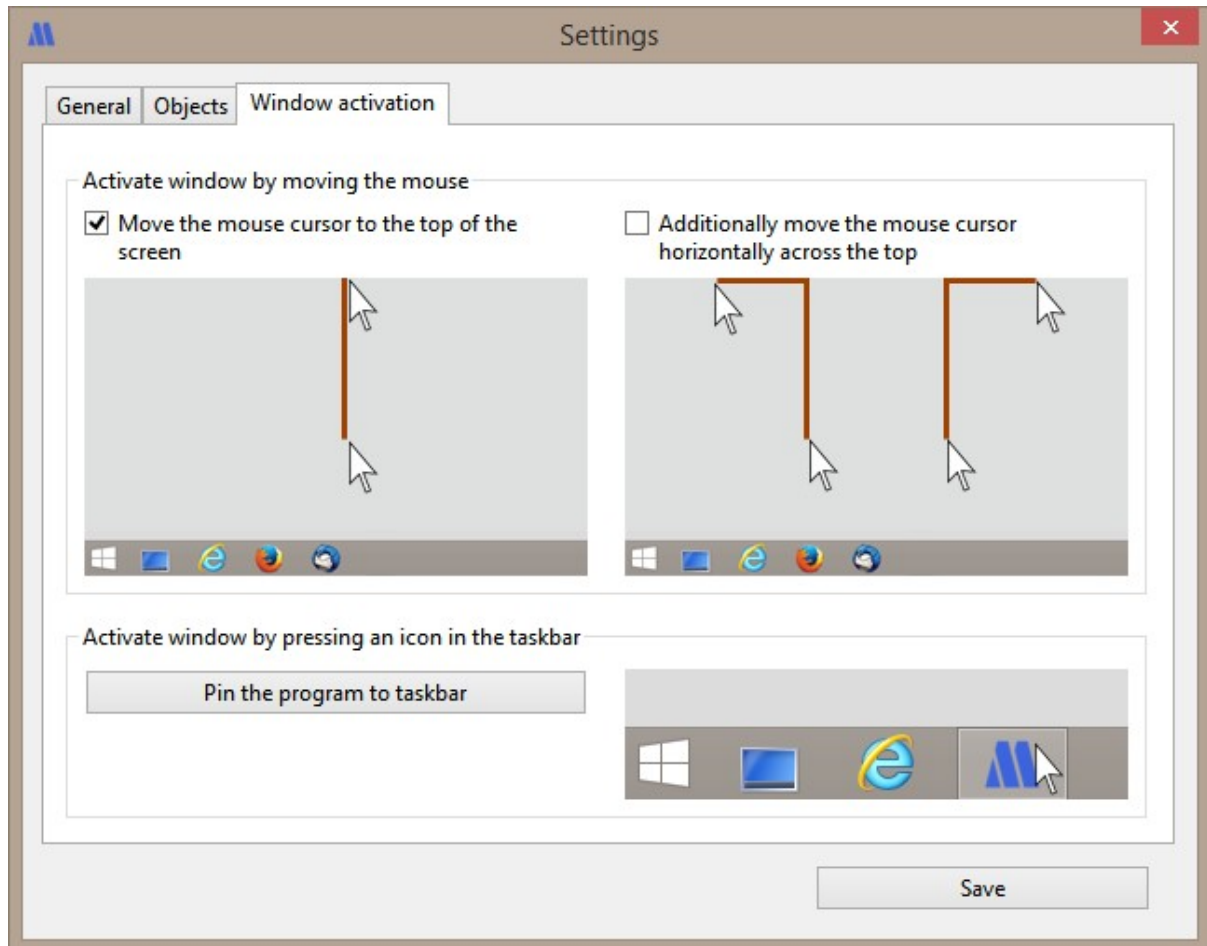
Recently started objects: The program remembers the recently started objects (shortcuts) for the specified number of days. If the program shall not memorize recently started/opened objects enter 0 days.

Search objects: The search function searches by default all folders in "My Own Menu" and in "Windows Start Menu". This option determines whether to search additionally in the list of "Recently Opened Documents".

Start objects: By default, the objects (shortcuts) will be started with a single click. If this option is set then always a double-click is needed to start/open an object.

3.3.3 Window Activation

The setting "**Window activation**" determines how to bring the window of My Start Menu to the foreground.

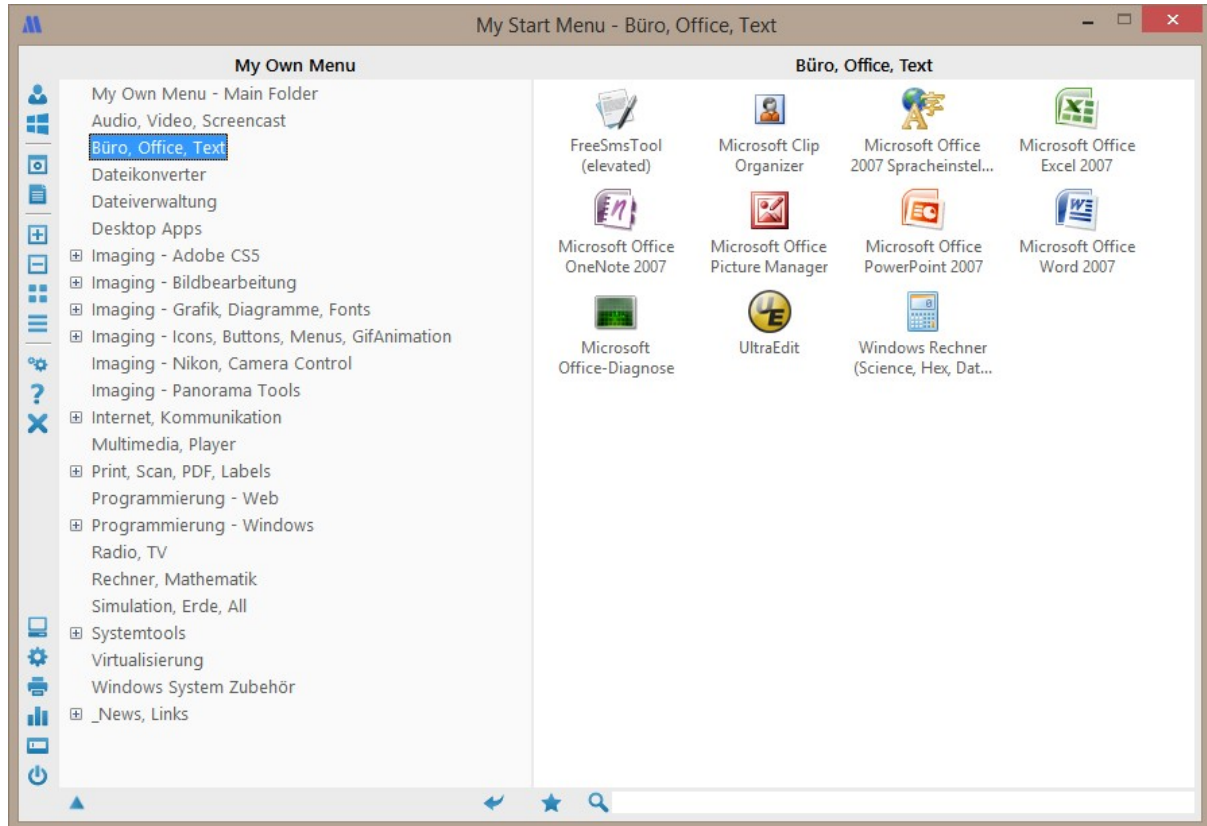


Activate window by moving the mouse: The first option brings the window of My Start Menu to the foreground by moving the mouse cursor to the top of the screen. If thereby the menu window will be activated unintentionally too often choose the second option additionally. Then your mouse cursor has to move additionally horizontally across the upper edge of the screen in order to activate the menu window.

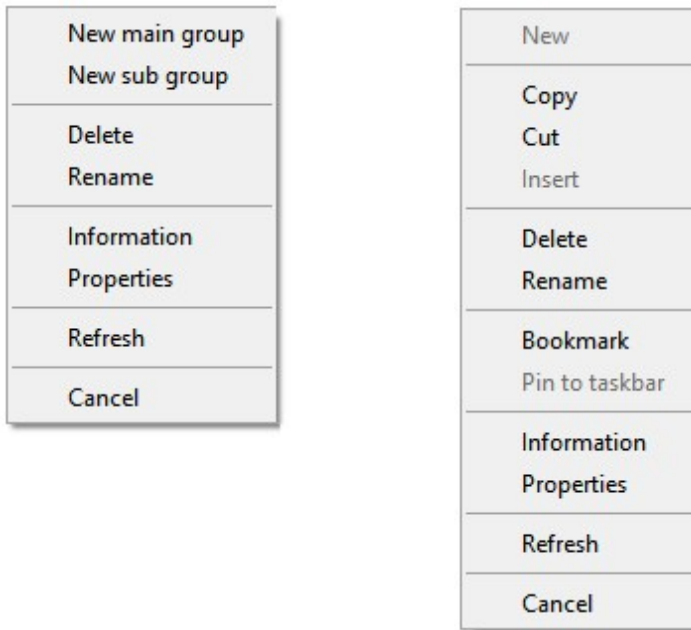
Activate window by pressing an icon in the taskbar: Since Windows 7 a program can be pinned to the taskbar, i.e. the corresponding icon remains visible in the taskbar regardless of whether a program is currently running or not. By clicking on the button "Pin the program to taskbar" My Start Menu is always visible in the taskbar and can either be started or activated by clicking on the relating program icon.

3.4 Operation

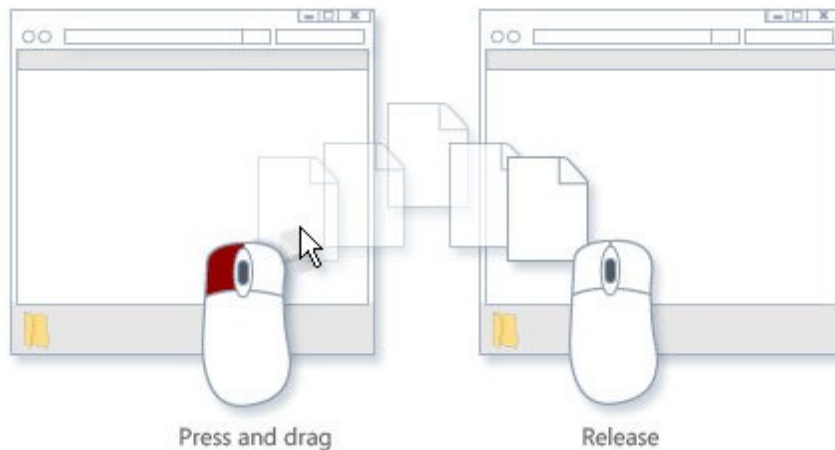
The software **My Start Menu** consists of the areas '**Toolbar**' on the left edge of the window, '**Menu Folders**' in the left half of the window and '**Menu Objects**' in the right half of the window.



Additionally, both areas 'Menu Folders' and 'Menu Objects' have their own context menu available through the right mouse button.



Furthermore, many functions which are dealing with the administration of objects within the menu folders can be performed by Drag & Drop.





3.4.1 Toolbar





The most basic function is to **switch the display** between **'My Own Menu'** and **'Windows Start Menu'**.

-  Show area 'My Own Menu' (freely customizable).
-  Show area 'Windows Start Menu' (not changeable).


Displays of **Recently Started Objects** and **Recently Opened Documents**.

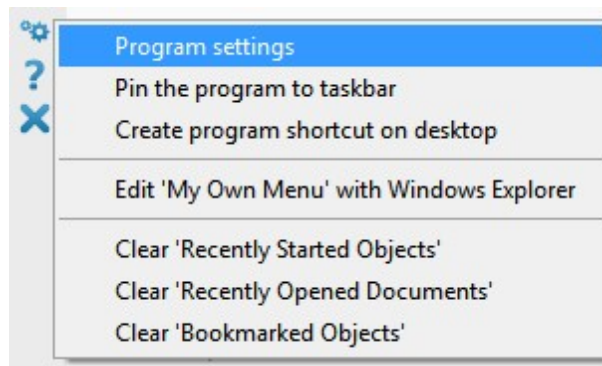
-  'Recently Started Objects' in 'My Own Menu' and 'Windows Start Menu' (eraseable).
-  'Recently Opened Documents' as memorized and made available by Windows (eraseable).

The **presentation of the menu folders and menu objects** can be adapted fast and easily.

-  Expand all menu folders and show contained subfolders (expand folder tree).
-  Hide all subfolders in all menu folders (collapse folder structure).
-  Show menu objects as large icons.
-  Show menu objects as list with small icons.

Settings, Help, License/Buy, Exit

-  Program settings (see [Settings](#)^[20]) and further program-specific functions:

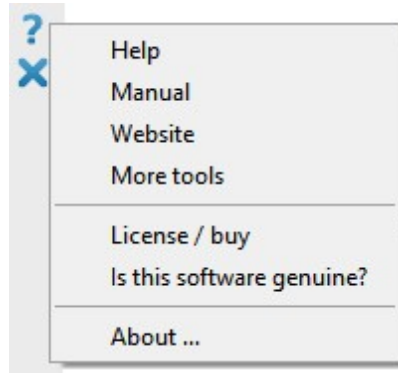


You can either pin the program to the taskbar or create a program shortcut on the desktop.

The lists of 'Recently Started Objects', 'Recently Started Documents' and 'Bookmarked Objects' can be cleared at any time.

The directory containing the shortcuts of 'My Own Menu' can also be managed externally in Windows Explorer.

? Help, Manual, Website, Buy and Enter License Key:



The software My Start Menu can directly be bought online under 'License / Buy'. The license key will then be forwarded to you by return email and can be entered here (see [Buy](#)¹⁴⁾).

X Exit program My Start Menu.

Further Functions

★ **Bookmarked Objects** for the intermediate storage of selected menu objects (Icons).

🔍 **Search function** searches the specified text in all menus and recently opened documents (optional).

▼ **Resize window** (enlarge / reduce).

↶ **Previous page** to go back to the last viewed group of icons.

Additional functions for a quick access to Windows

📁 Open **Windows Explorer** to manage files.

⚙️ Open **Windows Control Panel**.

🖨️ Open **Windows Devices and Printers**.

📊 Open **Windows Task Manager** to manage applications and processes.

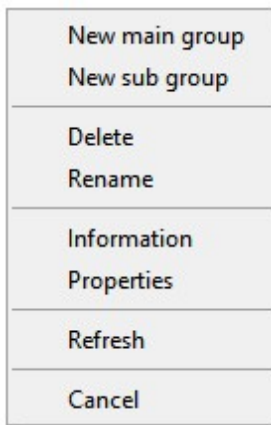
🖥️ Open **Windows "Run..."** to manually start an application or open a document.

🔌 **Turn Off Windows** (Lock, Logoff, Sleep, Restart, Shutdown).

3.4.2 Menu Management

The **menu management** can be done directly **within My Start Menu**. On one hand the **context menus** are available by right mouse click on the other hand the shortcut icons can be moved by **Drag & Drop** and interchanged with the Windows system.

Context menu of area 'Menu Folder'



When clicking with the right mouse button on a menu group the relating context menu appears enabling to create a new main group on the first level or a new subgroup within the selected menu group.

Menu groups can be deleted or renamed provided that they belong to 'My Own Menu'. Menu groups belonging to 'Windows Start Menu' cannot be modified.

Further information and the Windows properties of a menu folder can additionally be displayed, in particular the location where a menu group is stored.

Context menu of area 'Menu Objects'

New	The menu objects displayed in the right window area belong to the menu group selected in the left pane.
Copy	When clicking with the right mouse button on a menu object (icon) the context menu appears and offers the possibility to copy, cut, delete and rename an object.
Cut	
Insert	
Delete	When clicking the right mouse button next to the menu objects (icons) menu objects can be created and inserted via the context menu (copy/paste).
Rename	
Bookmark	In this manner menu objects can also be interchanged with Windows Explorer or the Windows Desktop. You can select several files in Windows Explorer and insert them in My Start Menu at once. According to the files inserted always correct shortcuts will be created, the files themselves will not be copied.
Pin to taskbar	
Information	Menu objects can be easily added to Bookmarked Objects if needed. The list of Bookmarked Objects is particularly suitable as temporary storage when assembling your own menu.
Properties	
Refresh	
Cancel	


Menu objects representing applications can be easily pinned to the taskbar (Windows 7 or higher) which is especially useful for very frequently used programs.

Further information and the Windows properties of a menu object can be displayed, in particular the location where a menu object is stored and the file the shortcut is referring to.

Drag & Drop of Menu Objects


Menu objects can simply be moved by Drag & Drop. Following actions are possible:


- Copy menu objects to another menu group (by dropping objects on a menu group).
- Move menu objects to another menu group (by holding down the shift key).
- Copy menu objects to the area Bookmarked Objects (by dropping objects on the bookmark icon ★).
- Copy one or more files from Windows Explorer or desktop to My Start Menu (by dropping objects on a menu group or the object list).
- Move one or more files from Windows Explorer or desktop to My Start Menu (by holding down the shift key).
- Copy one or more files from Windows Explorer or desktop to Bookmarked Objects (by dropping objects on the bookmark icon ★).

 Correct shortcuts will be created according to the files inserted; the files themselves will not be copied.

Managing the Menu Groups and Menu Objects using the Windows Explorer


Menu groups and menu objects can also be managed externally in Windows Explorer.

The base directory of the menu structure can be opened by clicking on the icon "Settings"  and choosing the entry "Edit 'My Own Menu' with Windows Explorer".


 In the menu only shortcuts of applications, files and web addresses should be added, no files itself.

3.4.3 First steps

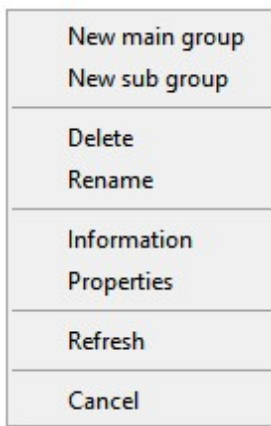
First steps for an easy start with My Start Menu.

Pin My Start Menu to the Windows taskbar where it is always available and visible. To do so just click on the icon  "Settings" and select the entry "Pin the program to taskbar". My Start Menu is now available for immediate access in the taskbar with the corresponding program icon (Windows 7 and newer):




 After the first start of My Start Menu a few menu groups are already available. You can either use or delete these groups. Create now the menu groups according to your needs. These menu groups can be modified and permanently expanded at any time.


Create Menu Groups



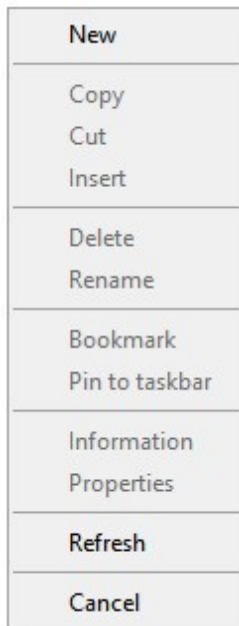
Click with the right mouse button on an empty area in the left pane in order to open the context menu of menu groups. Now select the entry "New main group".

In order to create sub groups click with the right mouse button on an already existing menu group and select the entry "New sub group".

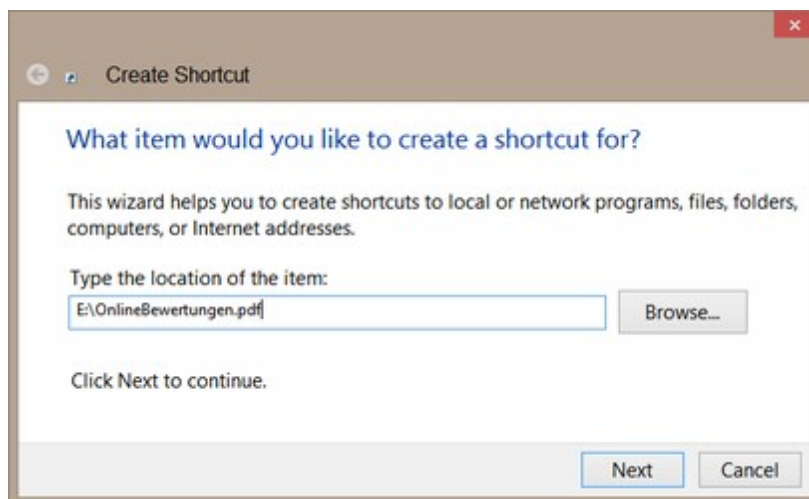
 Menu objects can now be added to the menu groups. Menu objects are shortcuts of applications, files, directories and web addresses (not the files themselves). The desired menu objects can be created by using the shortcut wizard, copied from the Window Explorer or from the Windows Start Menu.

 The first menu group 'My Own Menu - Main Folder' is perfectly suited to include the most important applications and further objects which frequently have to be started or opened when starting work.

Create Menu Objects using the Shortcut Wizard




Click with the right mouse button on an empty area in the right pane in order to open the context menu of menu objects. Now select the entry "New" and the shortcut wizard of Windows opens.



In order to create a shortcut of an object click on the button "Browse" to select the desired menu object. This could be an application, a file, a directory or an Internet address. Then press the button "Next" and choose an appropriate name for the menu item. By clicking on the button "Finish" the new shortcut is ready and can be included in your menu by pressing "OK".

Create Menu Objects using the help of Windows Explorer


Open Windows Explorer next to the window of My Start Menu. Then applications and files or already existing shortcuts and links can be copied to My Start Menu. You can do so by using the Drag & Drop method or via the context menu of both applications.

One or more objects can be added to a menu group, to the object list or to the Bookmarked Objects  using Drag & Drop from Windows Explorer to My Start Menu.

One or more objects can also be copied and inserted into the object list in the right pane of My Start Menu by using the context menu of both applications.


Correct shortcuts according to the objects inserted will automatically be created, the files themselves will not be copied.


Get Menu Objects from Windows Start Menu



Position My Start Menu on your desktop the way it is not completely covered by the Windows Start Menu. Now a menu object from the Windows Start Menu can directly be inserted into a menu group, the object list or the Bookmarked Objects  by using the Drag & Drop method.


Also via the context menu in Windows Start Menu one or more objects can be copied and inserted into the object list in the right pane of My Start Menu.

Get Menu Objects from Windows Start Menu within My Start Menu

My Start Menu can also display the contents of Windows Start Menu. The contents will be displayed when clicking on the icon  "Windows Start Menu".


Now, items from the Windows Start Menu can be copied to and collected under Bookmarked Objects by using Drag & Drop over the icon .


Then, click on the icon  "My Own Menu" and your previously created own menu groups are shown. Open the Bookmarked Objects by clicking on the icon  and copy all objects to your own menu structure just by dragging and dropping the objects to the appropriate menu group.


 'My Own Menu' is now ready to use. However, it should not be considered as completed, but as a control center for Windows, which can be continuously adjusted to the current requirements.

Use of different areas


Click on the corresponding icon to view an area.



 The area **'My Own Menu'** with its user defined sorted objects is probably the most frequently used area.

 The area **'Windows Start Menu'** may be useful in exceptional cases, as for example when a rare used program is required.


 The area **'Recently Started Objects'** is useful for fast access to recently used menu objects.


 The area **'Recently Opened Documents'** is listing the recently viewed documents (may contain items that are no longer available).

 The area **'Bookmarked Objects'** is well suited to serve as a temporary storage when creating the own menu structure. Files and links can easily be added/collected to the Bookmarked Objects using Drag & Drop to the icon. In this case the list of Bookmarked Objects will not be opened (contrary to the menu groups which will be opened when dropping objects).


 The **Search Function** is very helpful for a fast access to rarely used menu objects when their classification might not be remembered. The specified text will be searched in all menus and optionally also in Recently Opened Documents (see [Settings](#)^[20]). Simply enter the search term and press the ENTER key. Upper/lower case is not relevant. To use the already entered search term again, simply click on the icon .



Presentation of menu folders and menu objects

 Expand all menu folders and view the corresponding sub folders. This is very helpful when adding menu objects to the menu groups.

 When having many sub groups open close them fast and gain back a well listed overview.


 Show menu objects as large icons.

 Show menu objects as a list with small icons.

  Resize the window (enlarge / reduce) . This is useful to adapt the window to the present scope of the content.

3.5 Update

The simple steps for **updating to a new version** are as follows:

1. Download the latest program version from our website:
<http://www.infonautics-software.ch/mystartmenu>
2. Exit My Start Menu by clicking on the icon .
3. Install the new program version in the same directory where the existing version is located.
4. Start My Start Menu again.

When updating the software all previous settings and the license will be kept.

4 License Agreement

The program 'My Start Menu' has been developed by Infonautics GmbH Switzerland and is distributed as shareware, i.e. after the testing phase a license key per PC/user has to be purchased for a regular use of the software.

The activated full version of the software is restricted to the customer only. There is one license per PC needed.

The Software and all corresponding information material is owned and copyrighted by Infonautics GmbH, Switzerland. The Software must not be copied nor may it be used by any third party unless permitted explicitly by Infonautics GmbH in written form. The Software must not be modified, decompiled, disassembled nor otherwise reverse-engineered in any way.

The user of the Software is obligated to inform Infonautics GmbH in case of knowledge of any infringement of copyright or other intellectual property rights through third party.

By installing and using the Software the user agrees explicitly that Infonautics GmbH is not liable for any direct or indirect, special, incidental or consequential damages including, without limitation, damages for loss by work stoppage, computer failure or malfunction, data loss, or for any and all other damages or losses.

Any other services supplied by third parties to the customer are on no account subject of this Agreement. The Infonautics GmbH will not be liable for such services and products. Problems with the software will be solved as soon as possible by Infonautics GmbH according to their personnel, technical and financial possibilities. Infonautics GmbH supports the customer with the use of the software as good as possible. If this support exceeds the usual measure, or the corresponding reason is an improper operation or failure of the customers equipment, Infonautics GmbH will reserve the right to take into account the additional expenditure.

If any provision of this license agreement is found void or unenforceable, the remainder will remain valid and enforceable according to its terms.

This Agreement will be governed by the laws of Switzerland. Place of jurisdiction is the court responsible for the domicile of Infonautics GmbH, Switzerland.

Infonautics GmbH
Eichholzweg 16
CH-6312 Steinhausen
Switzerland

Phone 041-7431001
Fax 041-7431002

Email info@infonautics.ch
Internet www.infonautics.ch

© Copyright by Infonautics GmbH, Switzerland

Index

3

32bit 18

6

64bit 18

A

Administration 29

B

Base directory 32

Benefits 7

Buy 13, 14

Buy online 14

D

Description 6

Developer 16

Drag & Drop 32

E

Email 15

Enter licence key 14

F

FAQ 15

Features 8

First steps 32

Functions 8

G

General settings 21

I

Infonautics GmbH 16

Installation 18

Introduction 5, 6

L

Licence agreement 37

Licence key 13, 14

Licence types 13

M

Main folder 32

Main menu 19

Manual 17

Menu areas 32

Menu folder 32

Menu groups 32

Menu management 29

Menu objects 23, 32

Menu to foreground 24

O

Objects 23

Operating instructions 17

Operating System 12

Operation 25, 27

Overview 6

P

Pin to taskbar 32

Producer 16

Program start 19

Purchasing 13

R

Requirements 12

Restrictions 13

S

Screenshots 10
Search function 32
Settings 20, 23, 24
Shareware 14
Shortcut wizard 32
Starting the program 19
Support 15
System Requirements 12

T

Toolbar 27
Tools 27
Typical use 32

U

Update 36

W

Window activation 24
Windows functions 27

