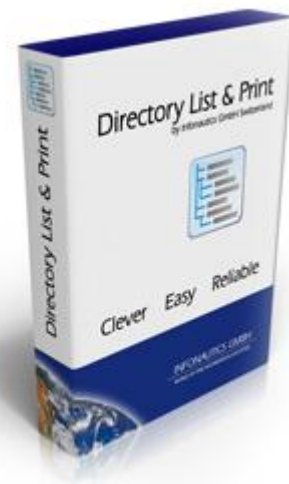


FAQ - Frequently Asked Questions Concerning Directory List & Print Pro Including Tips and Tricks.

This regularly updated document provides answers to the frequently asked questions concerning **Directory List & Print Pro**. The [table of contents](#) below offers an overview of all the different topics referred to in this document. The following [index directory](#) offers the possibility to find directly the specific question with the relating answer by the terms listed. From the [table of contents](#) as well as from the [index directory](#) you can get by mouse click directly to the requested topic.



Download the latest version of Directory List & Print [here](#)

Table of Contents

Index Directory	3
How to list and print directory and file listings	4
Create file and folder listings	5
How to sort a customized directory listing	6
How to create a list of files with a certain extension, e.g. *.pdf	7
How to display a directory overview with directory totals only	8
What file information can be displayed when printing my MP3 collection?	9
What file information can be displayed when organizing my image database by listing image and video files?	10
How to jump directly to a file from a folder listing (hyperlinking).	11
What file information of video files can be displayed?	11
How to filter lists of audio, video and image files	12
Filter function of Directory List & Print Pro	13
Possible output formats of Directory List & Print Pro	14
Directory List & Print is a portable application. What does this mean?	14
Output of directory listings in Excel does not work.	14
Output of directory listings in Word does not work.	15
Drag & Drop function from Windows Explorer	15
Directory List & Print in the context menu Windows Explorer	15
With which character sets does Directory List & Print work?	16
Language versions of Directory List & Print	16
Enter license key	16
Automated Update Checker	16
Support	17
Do you have any suggestions or requests regarding the further development of Directory List & Print Pro?	17
Contact	17

Index Directory

A

[audio files](#)

C

[character sets](#)

[contact](#)

[context menu](#)

[create](#) (folder and file listings)

D

[Drag & Drop development](#), further

E

[Excel](#) (does not work)

[EXIF](#)

F

[file extensions](#)

[file information](#)

[filter](#)

[filter options](#)

H

[hyperlinking](#)

[HTML table](#)

I

[image files](#)

[IPTC](#)

[ID3 tags](#)

L

[language versions](#)

[license key](#)

[list](#)

[LibreOffice](#)

M

[MP3 files](#)

O

[output formats](#)

[overview](#), directory

[OpenOffice](#)

P

[portable application](#)

[print](#)

[PDF](#)

S

[sort](#)

[suggestions](#)

[support](#) , technical

T

[totals](#), directory

[text file](#)

V

[video files](#)

W

[Windows Explorer](#)

[Word](#) (does not work)

How to list and print directory and file listings

Directory List & Print Pro enables listing and printing of a directory structure in a most simplest way. You can export your directory listings into other programs or open the data directly in Word and Excel or as HTML or XML file. (As of version 3.25 Directory List & Print Pro allows opening your file listings directly in Writer and Calc of OpenOffice / LibreOffice too).

In only 4 steps you can list and print your requested file or directory listings:

1. Choose the requested directory under the tab "1. Directory".
2. Define under "2. Columns" what information your file listing should include.
3. Numerous filter options under "4. Filter" enable to customize your folder listing according to your needs.
4. Subsequently, under "5. Output" you can print your defined file listings, copy to the clipboard, open directly in Word and Excel, Writer and Calc or output as HTML-table, XML-file or CSV-file.

Directory List & Print Pro

File Setup Help Infonautics GmbH (Corporate License, 10+ PCs), infonautics@infonautics.ch

1. Directory 2. Columns 3. Display 4. Filter 5. Output 6. Action Pro License

[Default printer settings]
 Use default printer
Print to Printer
Print to PDF

[Change Editor]
 Align column with blanks
 Use ; instead of TAB
Copy to Editor
Copy to Clipboard

[Edit my style]
 Use my style
 Hyperlinking
 For WWW
HTML
Word
Writer
Excel
Calc
Landscape
Excel function
 Hyperlinking
 Landscape
XML
TXT, CSV
File

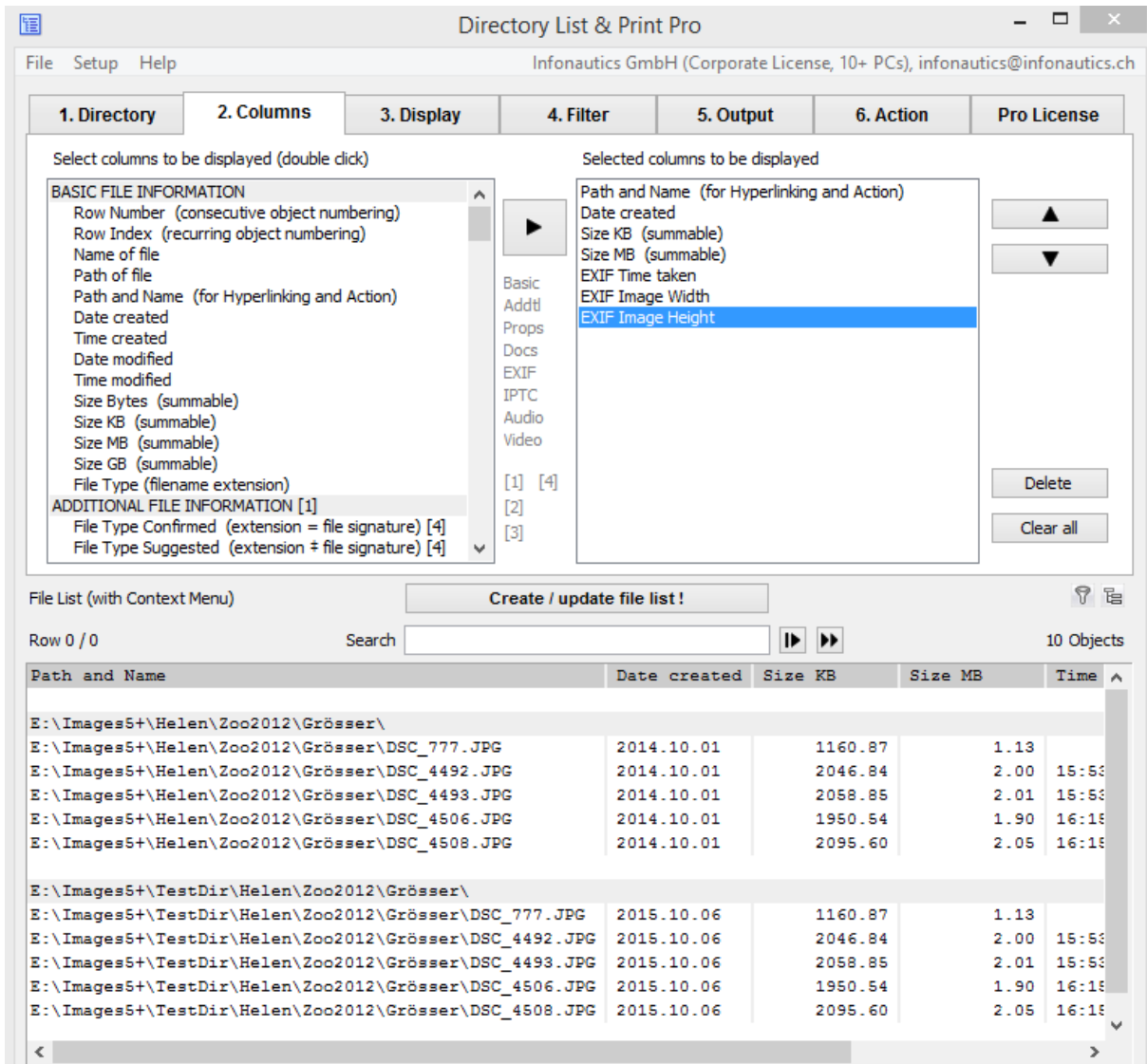
File List (with Context Menu) Create / update file list!

Row 0 / 0 Search 10 Objects

Path and Name	Date created	Size KB	Size MB
E:\Images5+\Helen\Zoo2012\Grösser\ E:\Images5+\Helen\Zoo2012\Grösser\DSC_777.JPG	2014.10.01	1160.87	1.13
E:\Images5+\Helen\Zoo2012\Grösser\DSC_4492.JPG	2014.10.01	2046.84	2.00
E:\Images5+\Helen\Zoo2012\Grösser\DSC_4493.JPG	2014.10.01	2058.85	2.01
E:\Images5+\Helen\Zoo2012\Grösser\DSC_4506.JPG	2014.10.01	1950.54	1.90
E:\Images5+\Helen\Zoo2012\Grösser\DSC_4508.JPG	2014.10.01	2095.60	2.05
E:\Images5+\TestDir\Helen\Zoo2012\Grösser\ E:\Images5+\TestDir\Helen\Zoo2012\Grösser\DSC_777.JPG	2015.10.06	1160.87	1.13
E:\Images5+\TestDir\Helen\Zoo2012\Grösser\DSC_4492.JPG	2015.10.06	2046.84	2.00
E:\Images5+\TestDir\Helen\Zoo2012\Grösser\DSC_4493.JPG	2015.10.06	2058.85	2.01
E:\Images5+\TestDir\Helen\Zoo2012\Grösser\DSC_4506.JPG	2015.10.06	1950.54	1.90
E:\Images5+\TestDir\Helen\Zoo2012\Grösser\DSC_4508.JPG	2015.10.06	2095.60	2.05

Create file and folder listings

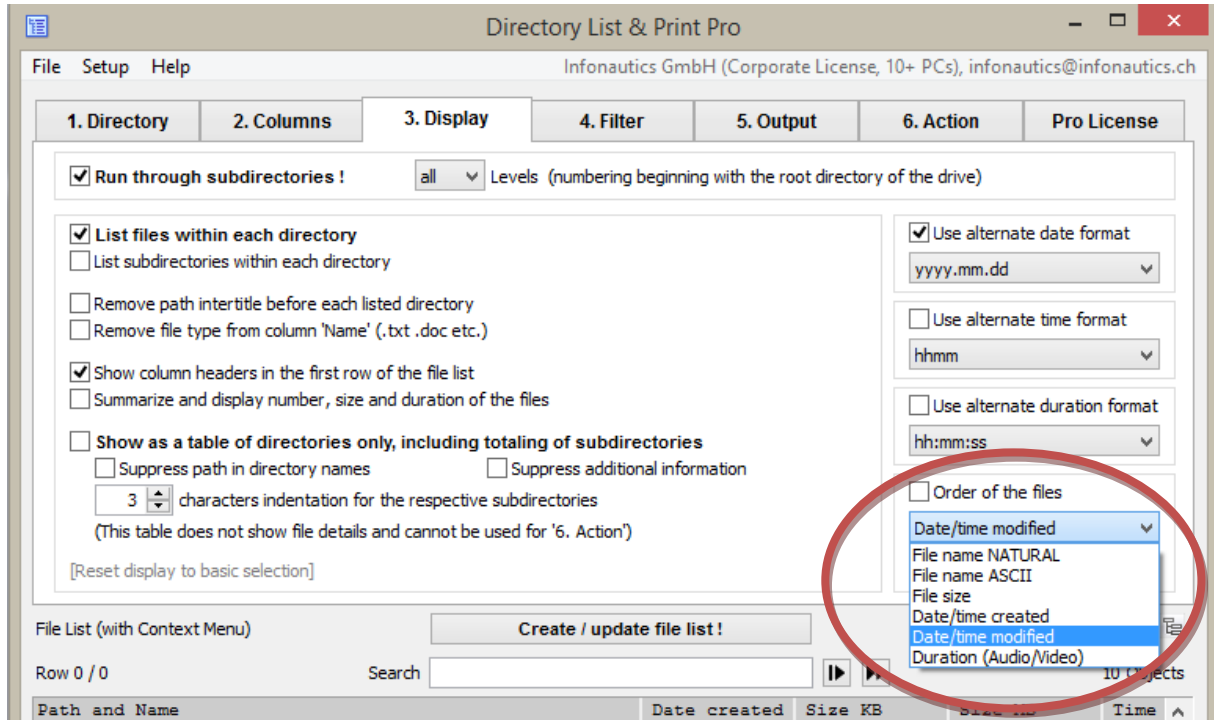
Directory List & Print Pro enables to create file and folder listings according to your needs. Select the requested file information and meta tags as EXIF, IPTC of images, video and audio files as well as of your documents under tab "2. Columns" in order to customize your folder listings.



How to sort a customized directory listing

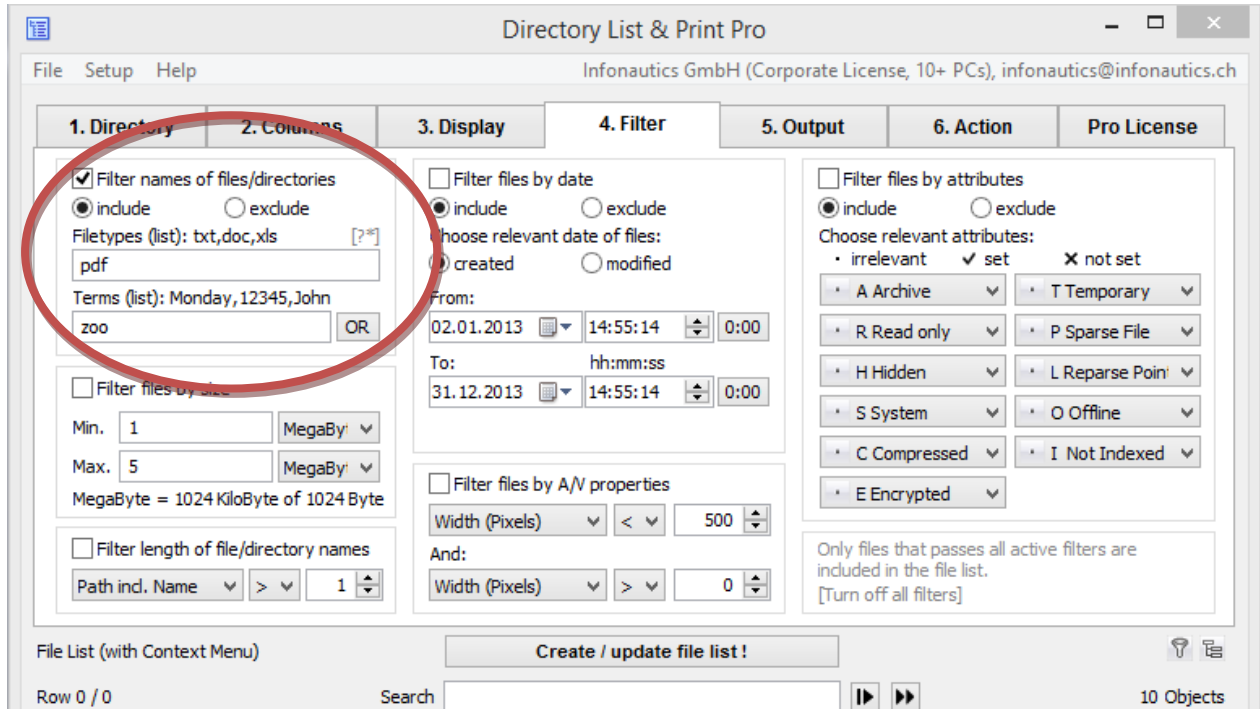
Within a directory, files can be sorted by name, size, date of creation and modification, duration (audio and video) in ascending or descending order

Choose the desired sorting under "3. Display" at the bottom right-hand corner under "Order of the files".



How to create a list of files with a certain extension, e.g. *.pdf

You can create lists of files with any extension. Filter your list by certain file extensions. Choose "File names of files/directories" under the tab "4. Filter" and type the corresponding extension in the field "File types" you want to include or exclude in your list. Of course, sub-directories can be included in your listing as well.



How to display a directory overview with directory totals only

Choose the option "Show as a table of directory totals only" under the tab "3. Display" and you will get a summary of the total number of subdirectories and total folders in a directory. If you want to suppress any file information just select "Suppress additional information".

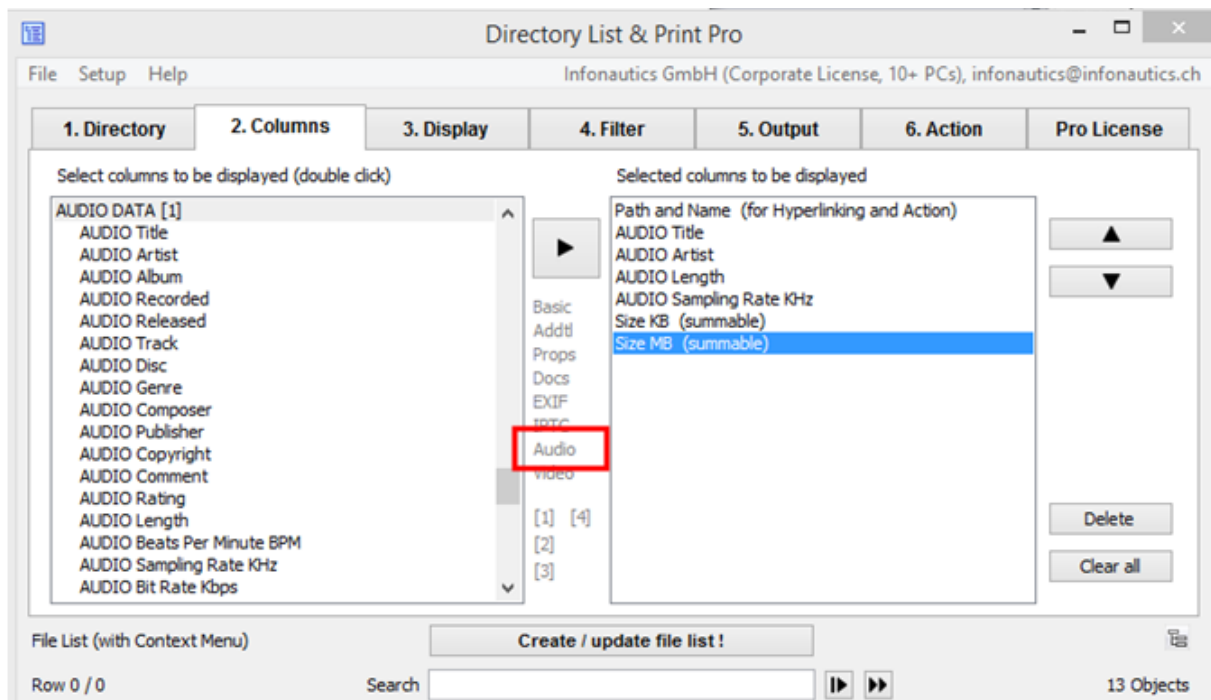
The screenshot shows the 'Directory List & Print Pro' application window. The '3. Display' tab is active, and the option 'Show as a table of directory totals only, with totaling of subdirectories' is selected. Below the settings, a table displays the directory overview:

Directory	Total Size	Total Subdirs	Total Files	This Size	This Subdirs	This Files
E:\TestDir\	10.91 MB	6	8	0	6	
E:\TestDir\Image\	8.65 MB	0	6	9065615	0	
E:\TestDir\Test\	2.26 MB	0	2	2369897	0	

Below the table, a summary is shown: TOTAL (Filter active) Subdirectories: 6 Files: 8 Size: 11'435'512 Bytes (10.91 MB)

What file information can be displayed when printing my MP3 collection?

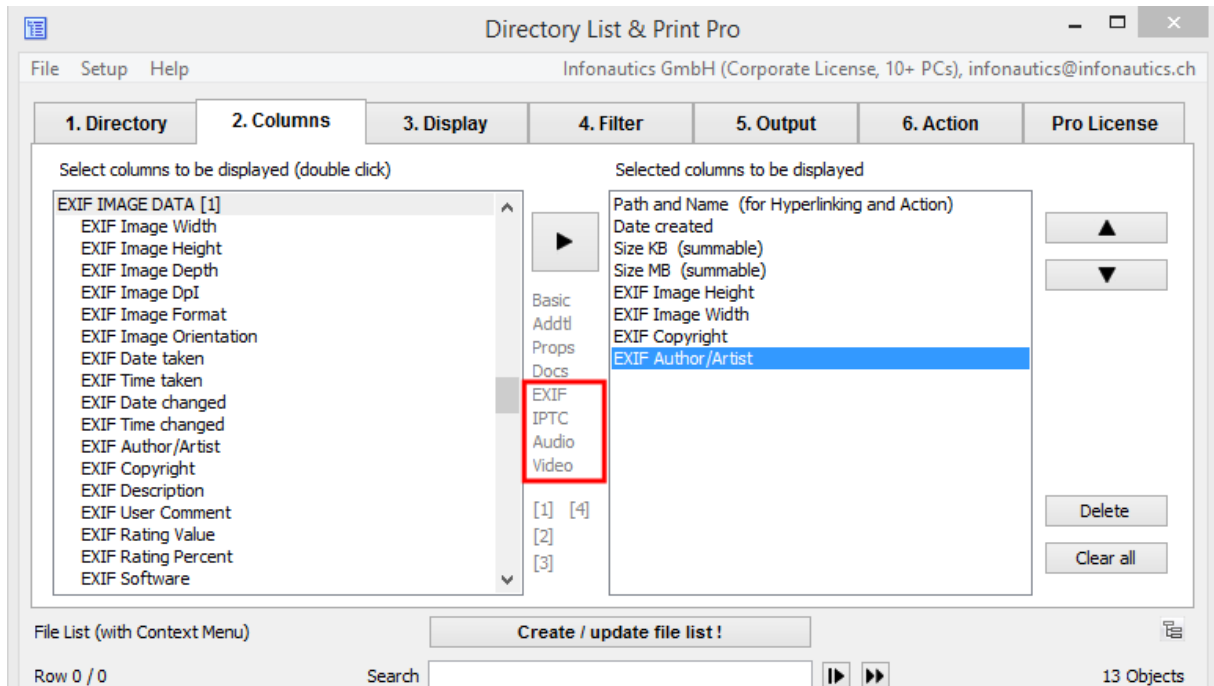
When creating a printable list of MP3 files you might want to include Audio meta tags and ID3 tags such as title, artist, length, sampling rate etc. in your file lists. Directory List and Print allows you to include a vast number of meta tags in your list. Click under "2 Columns" on the link "Audio" in the middle of the window and you will be shown specific meta tags to choose from for audio files.



For further information see also this **video tutorial** about listing MP3 files
<https://youtu.be/GFmTKobcetM>

What file information can be displayed when organizing my image database by listing image and video files?

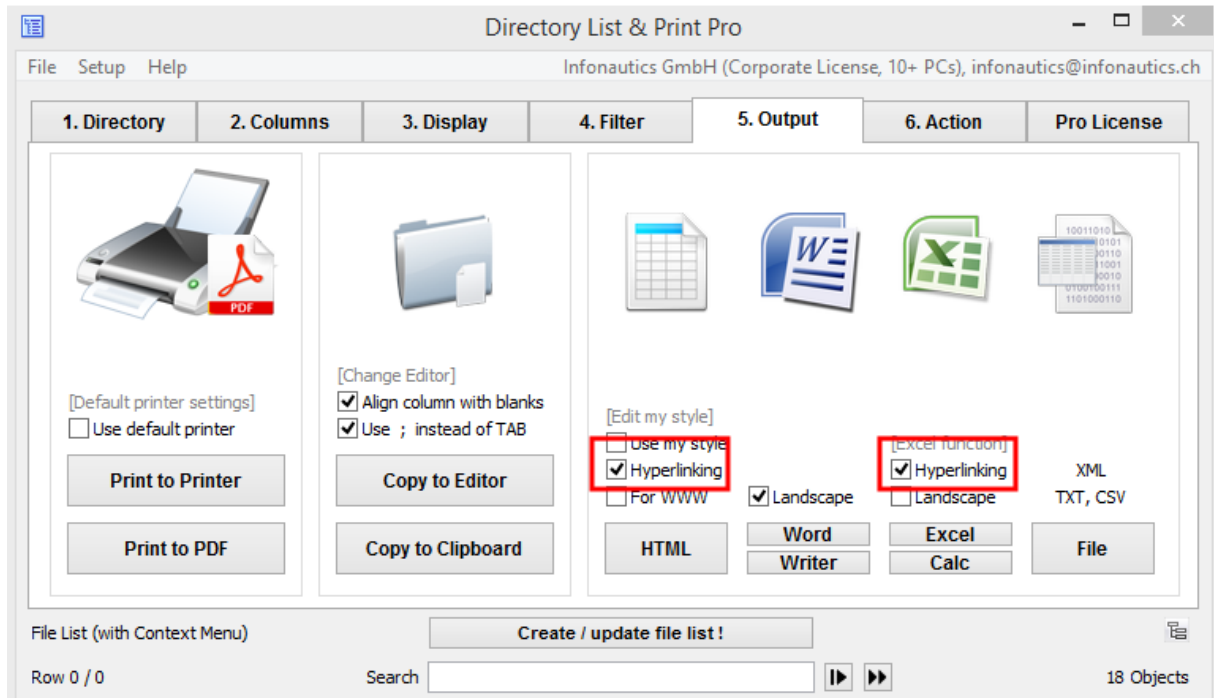
Besides the general information like file name, size, date of creation and modification additional meta tag information can be added to your list. Directory List & Print Pro can read the embedded **EXIF** and **IPTC tags** in your image files and many **VIDEO meta information** in your videos. Just choose under tab "2. Columns" the desired information you want to include in your list.



How to jump directly to a file from a folder listing (hyperlinking).

Directory List & Print allows exporting your file lists in many different output formats (see tab "5. Output"). When choosing the output formats HTML table, Excel or Calc (OpenOffice / LibreOffice) just click on "**Hyperlinking**". Afterwards, you can click in your final list on all pathnames and directly open or play the requested target file.

Note: hereto the information "Path and Name (for Hyperlinking and Action)" has to be selected under "2. Columns".

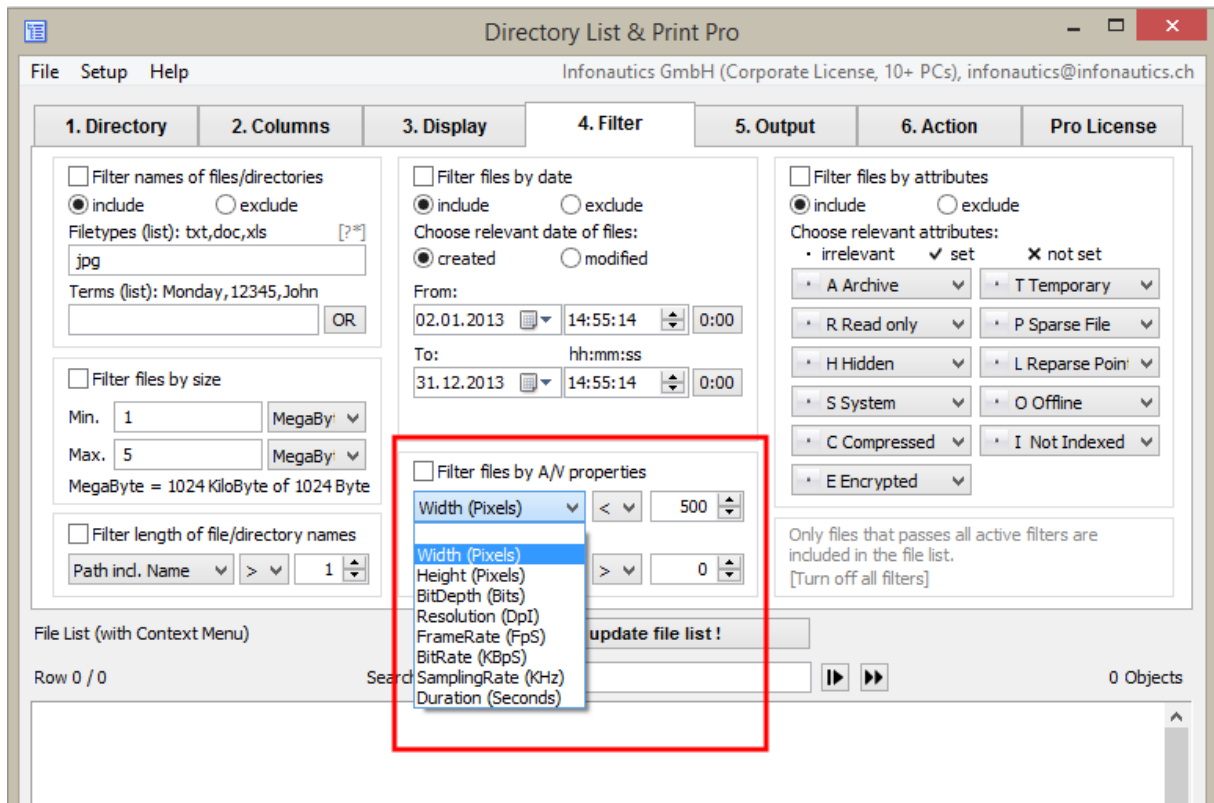


What file information of video files can be displayed?

Directory List & Print Pro can read and display **VIDEO meta tags** such as: title, date encoded, year recorded, year released, length, width, height, video format, video standard, frame rate, bit rate, genre, movie name, series name, series season, director, producer, publisher, artists, subject, description, keywords, copyright, comment, rating, law rating, application software. Choose the requested meta information under the tab "2. Columns".

How to filter lists of audio, video and image files

Besides filtering your lists by file name, type, size, path length Directory List & Print Pro offers additional filter options for your image, audio and video files. Under "4. Filter" you can filter you files by A/V properties: Width (Pixels), Height (Pixels), Bit Depth (Bits), Resolution (Dpl), Frame Rate (FpS), Bit Rate (KBps), Sampling Rate (KHz), Duration in seconds.

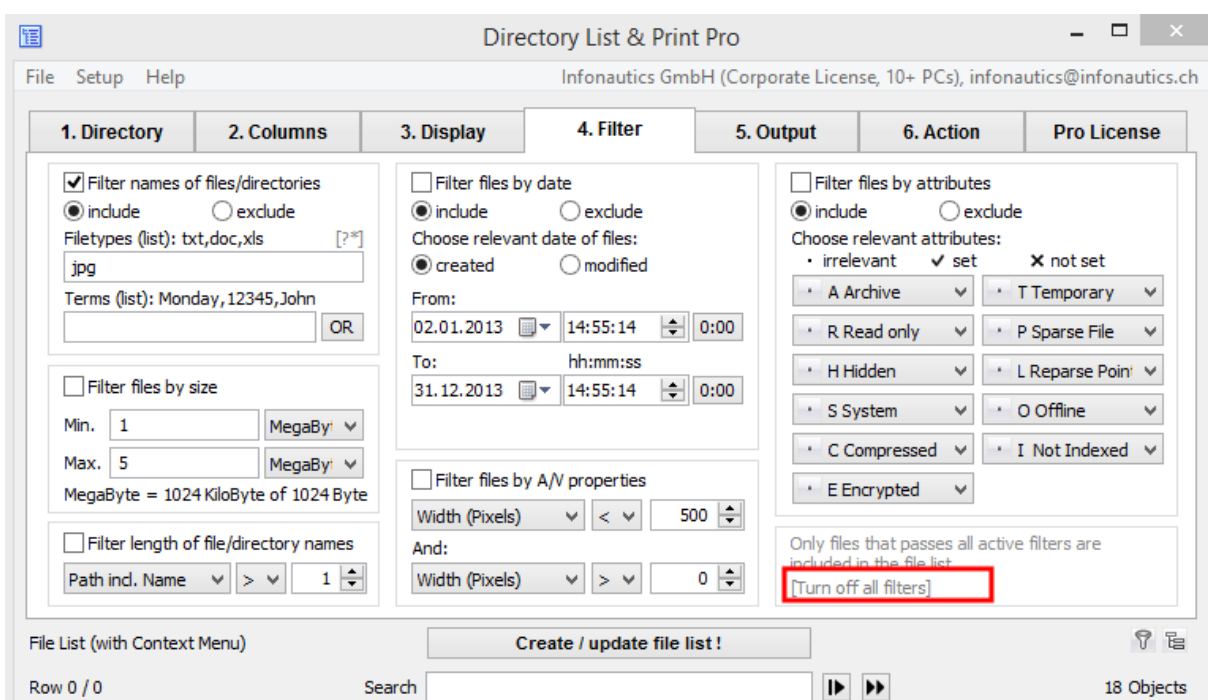


Filter function of Directory List & Print Pro

Under "4.Filter" Directory List and Print Pro offers numerous filter options in order to include or exclude requested files types in your lists. It is possible to filter either by file or directory name. Requested file types can be included or excluded. Further possibilities to filter are by size, length of filenames, date of creation and modification as well as by file attributes.

Multimedia files such as image, audio and video files can, in particular, be filtered by A/V properties (see "[How to filter lists of audio, video and image files](#)").

In order to reset the selected filter options simply click on "Turn off all filters".



Possible output formats of Directory List & Print Pro

Besides printing and copying the folder contents to clipboard Directory List & Print offers various output options. You can open your file lists directly in Word, Excel (Microsoft Office) or Writer, Calc (OpenOffice / LibreOffice) as well as output the data as HTML table, XML, PDF, or txt file.

Click on the links below to view **possible examples**:

Excel <http://www.infonautics-software.ch/public/dlpproexample.xls>

HTML table <http://www.infonautics-software.ch/public/dlpproexample.htm>

XML file <http://www.infonautics-software.ch/public/dlpproexample.xml>

PDF <http://www.infonautics-software.ch/public/dlpmp3example.pdf>

Text file (tabulator separated) <http://www.infonautics-software.ch/public/dlpmp3example.txt>

Directory List & Print is a portable application. What does this mean?

As a portable application the software does not have to be installed on your computer but can be started on any Windows PC, also from a mobile storage media (e.g. USB stick).

Download the portable [application here](#)

Output of directory listings in Excel does not work.

Directory List & Print is relying on the installed OLE/COM component of MS Office to establish communication with Word/Excel.

In case the output in "Excel" does not work the OLE-System (Object Linking and Embedding) of Excel has not been installed correctly. The only way to solve this is to fully reinstall Excel to setup the OLE/COM components of MS Office correctly.

Should this not be possible you can output the listing to the Clipboard and paste it to Excel, or output the listing to a CSV-File and open this file in Excel.

Output of directory listings in Word does not work.

Directory List & Print is relying on the installed OLE/COM component of MS Office to establish communication with Word/Excel.

In case the output in "Word" does not work the OLE-System (Object Linking and Embedding) of Word has not been installed correctly. The only way to solve this is to fully reinstall Word to setup the OLE/COM components of MS Office correctly.

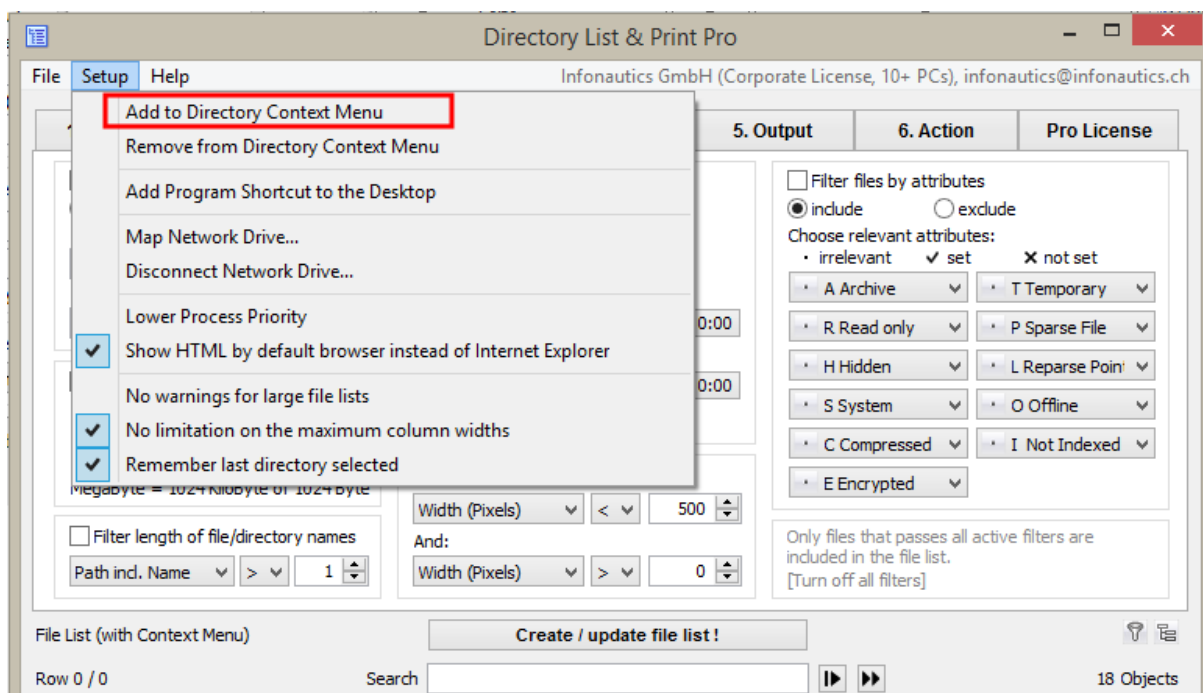
Should this not be possible you can output the listing to the Clipboard and paste it to Word.

Drag & Drop function from Windows Explorer

With the Drag & Drop function from the Windows Explorer you can select a requested directory and drag the opened application directly to Directory List & Print. The selected directory will then directly be opened in Directory List & Print for further output and printing options.

Directory List & Print in the context menu Windows Explorer

Directory List & Print can directly be embedded in the context menu of Windows Explorer in order to display directly the desired directory. Simply select in the top left in the menu "Setup" the option "Add to Directory Context Menu".



With which character sets does Directory List & Print work?

Directory List & Print works with all Western Latin character sets. Languages with Asian characters are not supported.

Language versions of Directory List & Print

Directory List & Print is available for download in the following language versions:

English <http://www.infonautics-software.ch/downloads/DirectoryListPrintEN.zip>

German <http://www.infonautics-software.ch/downloads/DirectoryListPrintDE.zip>

French <http://www.infonautics-software.ch/downloads/DirectoryListPrintFR.zip>

Italian <http://www.infonautics-software.ch/downloads/DirectoryListPrintIT.zip>

Dutch <http://www.infonautics-software.ch/downloads/DirectoryListPrintNL.zip>

Portuguese <http://www.infonautics-software.ch/downloads/DirectoryListPrintBR.zip>

Enter license key

After your purchase of the Pro version you will receive an email confirmation including the license key in order to activate the Pro version. Copy the multiline license key into the appropriate field under the tab "Pro License" and click on the button "Activate License". For further details how to enter the license key please watch this **video tutorial** <https://youtu.be/bfPoxgv6HFM>

Automated Update Checker

Directory List & Print comes with an automated update checker. This feature enables you to check for updates and install the latest update easily and automatically. Please watch this **video tutorial** on [how to update Directory List & Print automatically](#).

Support

Please visit our [blog page](#) providing helpful advice regarding basic features and [video tutorials](#). In case of any questions please contact us at support@infonautics.ch. INFONAUTICS GmbH will answer your questions by email in English and German within 48 hours. INFONAUTICS GmbH is based in Switzerland. Please consider possible time differences.

Do you have any suggestions or requests regarding the further development of Directory List & Print Pro?

We look forward to receiving your suggestions as well as possible criticism at development@infonautics.ch.

Contact

INFONAUTICS GmbH

Eichholzweg 16

6312 Steinhausen

Switzerland

Phone +41-4174301001

Email infonautics@infonautics.ch

Facebook <https://www.facebook.com/InfonauticsGmbH/>

LinkedIn <https://www.linkedin.com/company/infonautics-gmbh>

Youtube <https://www.youtube.com/user/Infonautics>

Google+ <http://www.google.com/+InfonauticsCh>