



Copy Files With Dates

© Infonautics GmbH, Switzerland

Copy Files With Dates is a program for Windows™ to copy files while keeping the original creation date, modification date and the original attributes of the files and directories. All files available in the Windows File System serve as data sources, as well as all files accessible via the MTP protocol (Media Transfer Protocol) on Smartphones and Tablets (Android and iPhone).

The program quickly and easily solves the fundamental problem that Windows™ sets the date of copying as the new creation date of files and folders when copying files between different drives and devices, and the original creation date of files and directories is lost.

In addition, when files are copied in Windows, **Copy Files With Dates** also transfers the original last modification date and the last access date (if updated by Windows), as well as the original file attributes such as "Read-only", "Hidden", "System", "Archive", "Index" etc.

For the copied subdirectories in Windows, the original creation date and the original modification date as well as all existing directory attributes are also transferred to the new directories.

For files already existing on the target medium, you can choose whether they should be overwritten or not.

Also you can specify whether subdirectories should be copied as well, or only files from the selected directory.

Files and directories can be filtered by text criteria (include, exclude, with wildcard placeholders).

Before copying, the program calculates the size of the files to be copied, and then provides continuous information on the exact status of the copying process.

The copying process can be tested in advance without actually copying the files.

The program is UNICODE-compatible and can copy file names with characters from all languages.

For special files under Windows also applies:

Encrypted files are encrypted again when they are copied to the destination disk if it supports encryption, otherwise without encryption.

Symbolic links (SymLinks) to files and directories are equally copied as symbolic links, not the linked files themselves.

The program also copies auxiliary files hidden by the system such as "Desktop.ini" and "Thumbs.db".

Download

The functionality of the program can be tested with the freely available demo version; it is limited to copying of 5 files per run. The unlimited full version can be unlocked by entering a license key, which can be bought for a small amount directly online (shareware).

<https://www.infonautics-software.ch/copy-files-with-dates>

Full Version / License Key

For the unlimited use of the application, the full program version is required. It can be activated by entering a license key, which can be purchased online for a small amount at the following address:

<https://www.infonautics-software.ch/copy-files-with-dates/buy>

The license is valid for an unlimited time and all future updates.

Favorable multiple licenses are available for equipping several devices.

For personal use in the name of the user:

'Personal License' (4 PCs)

For companies in the name of the respective company:

'Business License' (10 PCs/Users in the same company)

'Corporate License' (unlimited PCs/Users in the same company)

System Requirements

Operating System Windows™ 7/8/10 (32 bit and 64 bit).
About 5 MB free space on disk.

Program Installation

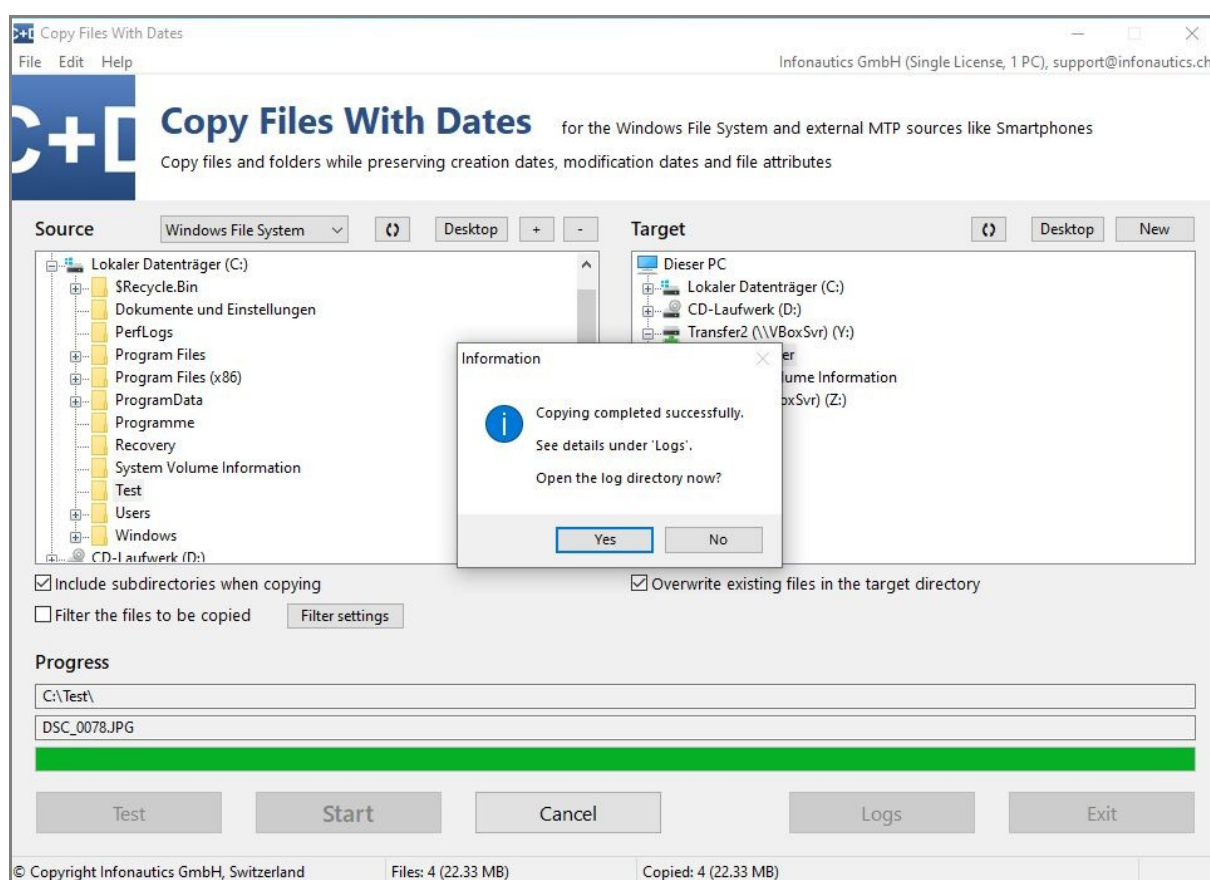
Start the setup program "CopyFilesWithDatesEN.exe" and follow the instructions. Afterwards there is an entry in the start menu and a program shortcut on the desktop available to start the program.

Both the setup program and the program itself are digitally signed. Before starting please check the **validity of the Digital Signature** of the executable EXE-files (context menu: Properties: Digital Signatures: open 'Infonautics GmbH'). If the signature is invalid or missing then the program has been altered by third parties and may thereby cause harm. In this case please download the original software directly from the manufacturers website (see paragraph "Download" above).

Program Interface

The program supports copying files and directories while keeping the original creation and modification date including the file attributes in a few simple steps:

1. **Select the source** that contains the files and subdirectories to be copied (Windows File System or MTP Connections to external devices).
2. **Select the target destination** that shall receive the files and subdirectories.
3. **Select** whether subdirectories should also be copied and whether existing files in the destination directory may be overwritten.
4. **Start** the copy operation by pressing 'Start'.



Drag & Drop

Source and destination directories can be easily set by dragging a directory or file from Windows Explorer to the appropriate directory tree (Source directory / Destination directory). The same applies to previously saved configuration files that are dragged to the rest of the program window.

Progress Bar

The progress bar is based on a prior calculation of the size of the files to be copied and is constantly and precisely updated during the copy process.

During copying, the current directory and the currently copied file are displayed.

In the status bar of the window, the corresponding size of the files to be copied is displayed after the calculation, and during copying the size of the files that have already been successfully copied.

© Copyright Infonautics GmbH, Switzerland	Files: 4 (22.33 MB)	Copied: 4 (22.33 MB)
---	---------------------	----------------------

When copying is complete, a message window confirms that all files have been successfully copied or indicates that some files could not be copied.

Logs

The directory with the log files is opened via the button "Logs".

Every copy process is documented in a log file, the name consists of the date and time:
YYYY-MM-DD_HH-MM-SS.txt

The log also contains information if individual files could not be copied.
Old log files may be deleted at any time.

Save and load configuration

All current settings can be stored in one or more configuration files with the file extension ".cfwd". They can be reloaded as needed to reproduce the so-saved settings. See menu "File", "Save configuration to a file" and "Load configuration from a file".

Configuration files can also be loaded by dragging and dropping them onto the program window (outside the directory trees).

Contact

Infonautics GmbH
Eichholzweg 16
CH-6312 Steinhausen
Switzerland

Internet: <https://www.infonautics-software.ch/copy-files-with-dates>

E-Mail: support@infonautics.ch

Windows™ is a Trademark of Microsoft Corporation