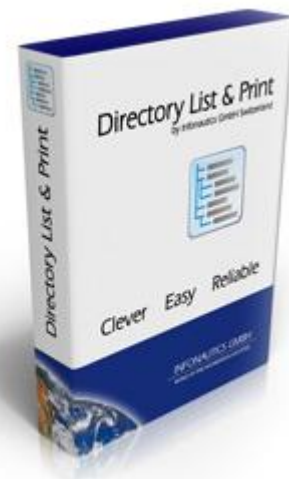




## FAQ - Frequently Asked Questions Concerning Directory List & Print Pro Including Tips and Tricks.

This regularly updated document provides answers to the frequently asked questions concerning **Directory List & Print Pro**. The [table of contents](#) below offers an overview of all the different topics referred to in this document. The following [index directory](#) offers the possibility to find directly the specific question with the relating answer by the terms listed. From the [table of contents](#) as well as from the [index directory](#) you can get by mouse click directly to the requested topic.



*Download the latest version of Directory List & Print [here](#)*

## Table of Contents

Index Directory	3
How to list and print directory and file listings	4
Create file and folder listings	6
How to sort a customized directory listing	7
How to create a list of files with a certain extension, e.g. *.pdf	8
How to display a directory overview without any file information (directory totals only)	8
What file information can be displayed when printing my MP3 collection?	9
What file information can be displayed when organizing my image database by listing image and video files?	9
How to jump directly to a file from a folder listing (hyperlinking).	9
What file information of video files can be displayed?	9
How to filter lists of audio, video and image files	10
Filter function of Directory List & Print Pro	11
Possible output formats of Directory List & Print Pro	12
Directory List & Print is a portable application. What does that mean?	12
Output of directory listings in Excel does not work.	12
Output of directory listings in Word does not work.	13
Drag & Drop function from Windows Explorer	13
Directory List & Print in the context menu Windows Explorer	13
With which character sets does Directory List & Print work?	14
Language versions of Directory List & Print	14
Enter licence key	15
Support	15
Do you have any suggestions or requests regarding the further development of Directory List & Print Pro?	15
Contact	15

## Index Directory

### A

[audio files](#)

### C

[character sets](#)

[contact](#)

[context menu](#)

[create](#) (folder and file listings)

### D

[Drag & Drop](#)

[development](#), further

### E

[Excel](#) (does not work)

### F

[file extensions](#)

[file information](#)

[filter](#)

[filter options](#)

### H

[hyperlinking](#)

### I

[image files](#)

### L

[language versions](#)

[licence key](#)

[list](#)

### M

[MP3](#) files

### O

[output formats](#)

[overview](#), directory

### P

[portable application](#)

[print](#)

### S

[sort](#)

[suggestions](#)

[support](#) , technical

### T

[totals](#), directory

### V

[video files](#)

### W

[Windows Explorer](#)

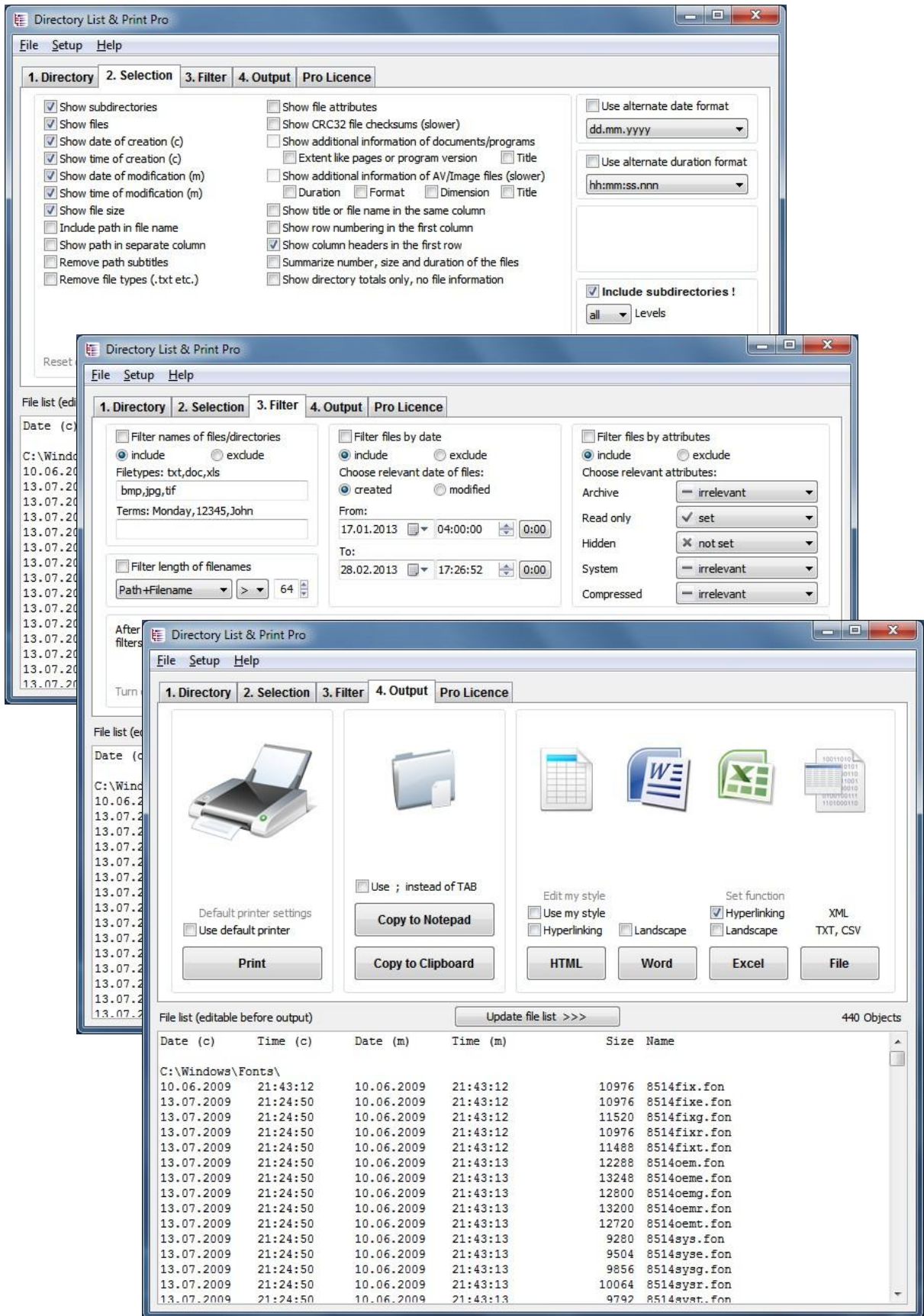
[Word](#) (does not work)

## How to list and print directory and file listings

Directory List & Print Pro enables listing and printing of a directory structure in a simplest way. By copying to the clipboard the directory listing can be exported into other programs or opened directly in Word and Excel or saved as HTML or XML file.

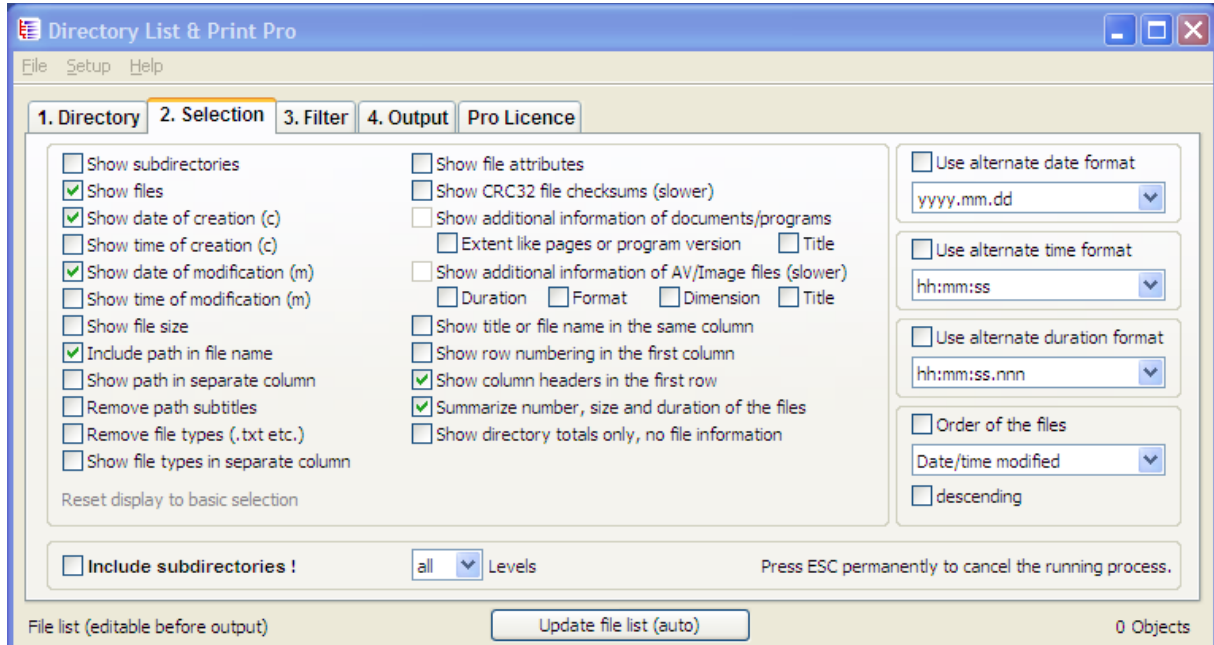
In only 4 steps you can list and print your requested file or directory listings:

1. Choose the requested directory under the tab "1. Directory".
2. Define what information the file listing should include under "2. Selection".
3. Numerous filter options under "3. Filter" enable to customize your folder listing according to your needs.
4. Subsequently, under "4. Output" you can print your defined file listings, copy to the clipboard, open directly in Word and Excel, or output as HTML-table, XML-file or CSV-file.



## Create file and folder listings

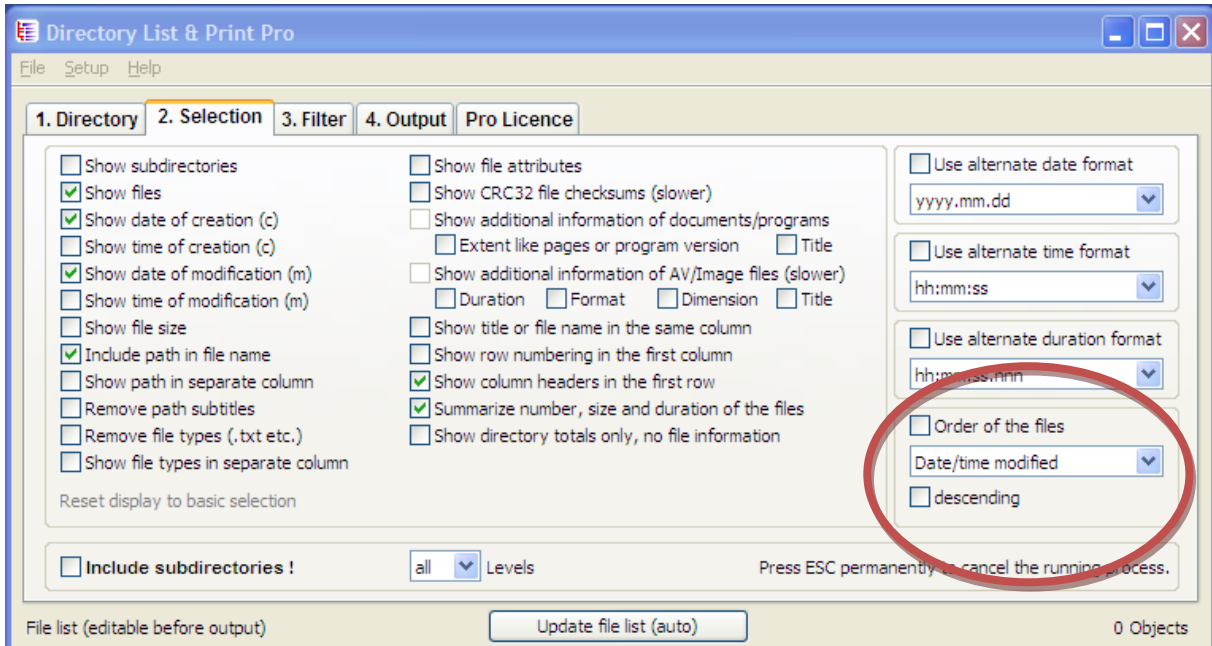
Directory List & Print Pro enables to create file and folder listings according to your needs. In order to customize your folder listings you can select directories and sub-directories, display date of creation and modification, show the path address in file name, remove file extensions, show file attributes, show CRC32 file checksums as well as additional information for lists of documents, programs and multimedia files such as image, audio and video files.



## How to sort a customized directory listing

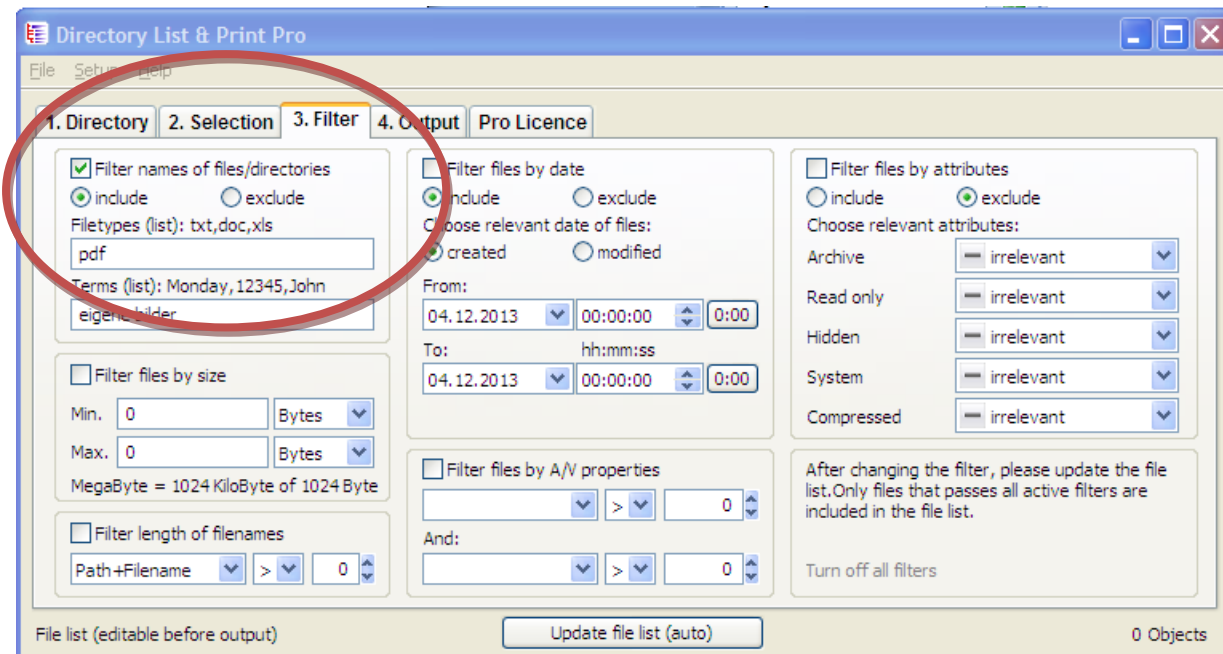
Within a directory, files can be sorted by name, size, date of creation and modification in ascending or descending order

Choose the desired sorting under "2. Selection" at the bottom right-hand corner under "Order of the files".



## How to create a list of files with a certain extension, e.g. \*.pdf

You can create lists of files with any extension. Filter your list by certain file extensions. Choose "File names of files/directories" under the tab "3. Filter" and type the corresponding extension in the field "File types" you want to include or exclude in your list. Of course, sub-directories can be included in your listing too.



## How to display a directory overview without any file information (directory totals only)

Choose the option "Show directory totals only, no file information" under the tab "2. Selection" and you will get a summary with information regarding the total number of folders, files and file size. See example here:

Folder	Files	Size	Directory
6	0	0	E:\TestDir\
0	2	9055988	E:\TestDir\Audio\
0	7	1525271	E:\TestDir\Document\
0	2	558665	E:\TestDir\Executables\
0	24	75293650	E:\TestDir\Image\
0	2	2369897	E:\TestDir\Testäöüàèè\
0	12	225765150	E:\TestDir\Video\
<b>TOTAL Folders: 6 Files: 49 Size: 314'568'621</b>			



## **What file information can be displayed when printing my MP3 collection?**

Besides the general information like modification date of MP3 file, size of MP3 file additional data, especially for audio and video files, such as duration, format, sampling rate KHz and bit rate KBpS can be listed.

## **What file information can be displayed when organizing my image database by listing image and video files?**

Besides the general information like file name, size, date of creation and modification additional information, especially for image and video files, such as information regarding format and dimension as Width, Height, Bit Depth, Resolution Dpl, Frame Rate FpS can be listed.

## **How to jump directly to a file from a folder listing (hyperlinking).**

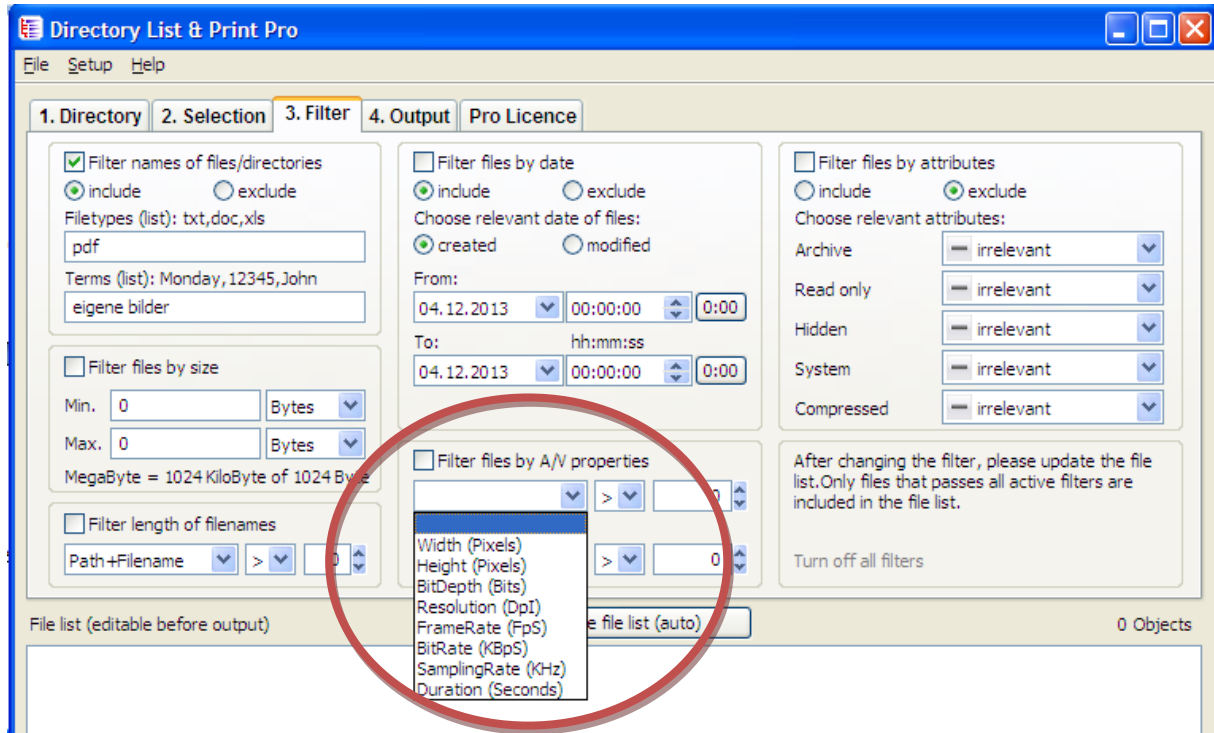
In a directory listing, opened in Excel, there is the possibility to click on a file in order to open directly the target file. For this purpose you have to open the directory listing in "Excel" and set the function "Hyperlinking". Afterwards you can click on all pathnames of the directory including file names and directly open or play the requested target file. (Note: hereto the option "Include path in file name" has to be selected under "2. Selection".)

## **What file information of video files can be displayed?**

Directory List & Print Pro enables to display the details of numerous video formats such as MP4, MPEG, Flash Video, MPEG Transport Stream), AVCHD (Advanced Video Codec High Definition), Blue ray MPEG-2 Transport Stream, DIVX/XVID, Matroska and many more.

## How to filter lists of audio, video and image files

Under "3. Filter" your lists of audio, video as well as image files can be filtered by properties: Width (Pixels), Height (Pixels), Bit Depth (Bits), Resolution (Dpi), Frame Rate (FpS), Bit Rate (KBps), Sampling Rate (KHz), Duration in seconds.

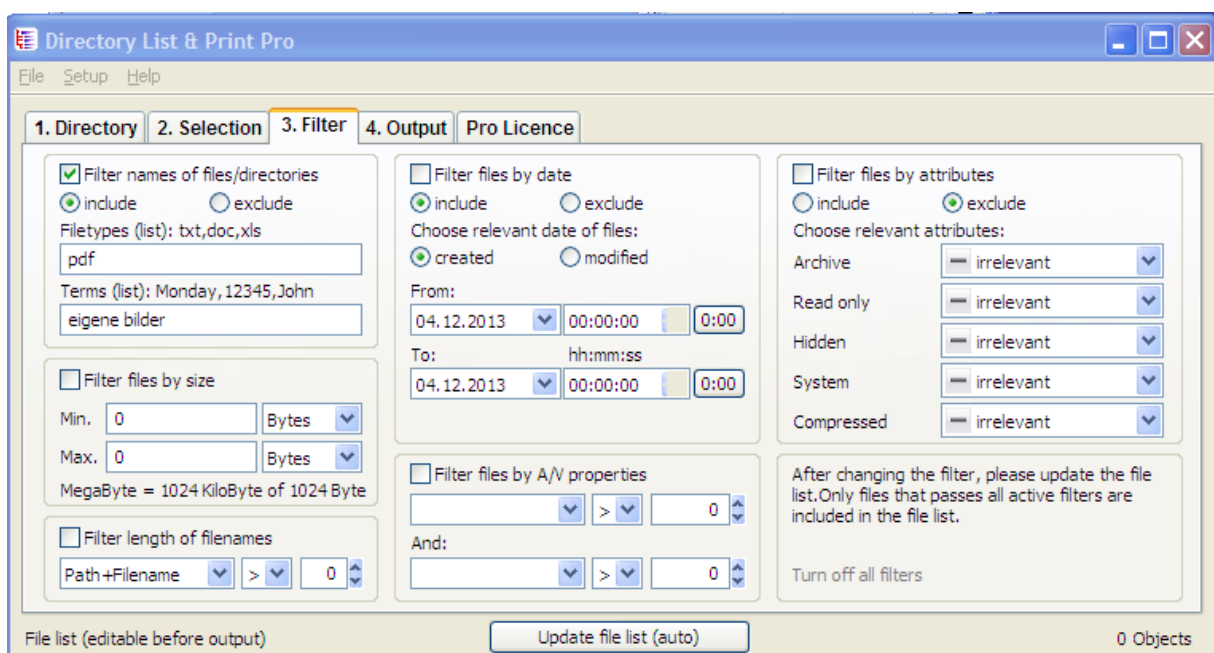


## Filter function of Directory List & Print Pro

Under "3. Filter" Directory List and Print Pro offers numerous filter options in order to include or exclude requested files types in your lists. It is possible to filter either by file or directory name. Requested file types can be included or excluded. Further possibilities to filter are by size, length of filenames, date of creation and modification as well as by file attributes.

Multimedia files such as image, audio and video files can, in particular, be filtered by A/V properties (see "[How to filter lists of audio, video and image files](#)").

In order to reset the selected filter options simply click on "Turn off all filters".



## Possible output formats of Directory List & Print Pro

Besides printing and copying the folder contents to clipboard Directory List & Print offers the possibility to open the folder contents directly in Word or Excel. (Example: <http://www.infonautics.ch/directorylistprint/dlp-pro-example.xls>).

The Pro version offers further output options such as the output as HTML table with the possibility to customize font and color (Example: <http://www.infonautics.ch/directorylistprint/dlp-pro-example.htm> ), as well as comma- or tab-delimited file or CSV file. Furthermore, the output of the lists in XML is possible (Example: <http://www.infonautics.ch/directorylistprint/dlp-pro-example.xml> ).

## Directory List & Print is a portable application. What does this mean?

As a portable application the software does not have to be installed on your computer but can be started on any Windows PC, also from a mobile storage media (e.g. USB stick).

## Output of directory listings in Excel does not work.

Directory List & Print is relying on the installed OLE/COM component of MS Office to establish communication with Word/Excel.

In case the output in "Excel" does not work the OLE-System (Object Linking and Embedding) of Excel has not been installed correctly. The only way to solve this is to fully reinstall Excel to setup the OLE/COM components of MS Office correctly.

Should this not be possible you can output the listing to the Clipboard and paste it to Excel, or output the listing to a CSV-File and open this file in Excel.

## Output of directory listings in Word does not work.

Directory List & Print is relying on the installed OLE/COM component of MS Office to establish communication with Word/Excel.

In case the output in "Word" does not work the OLE-System (Object Linking and Embedding) of Word has not been installed correctly. The only way to solve this is to fully reinstall Word to setup the OLE/COM components of MS Office correctly.

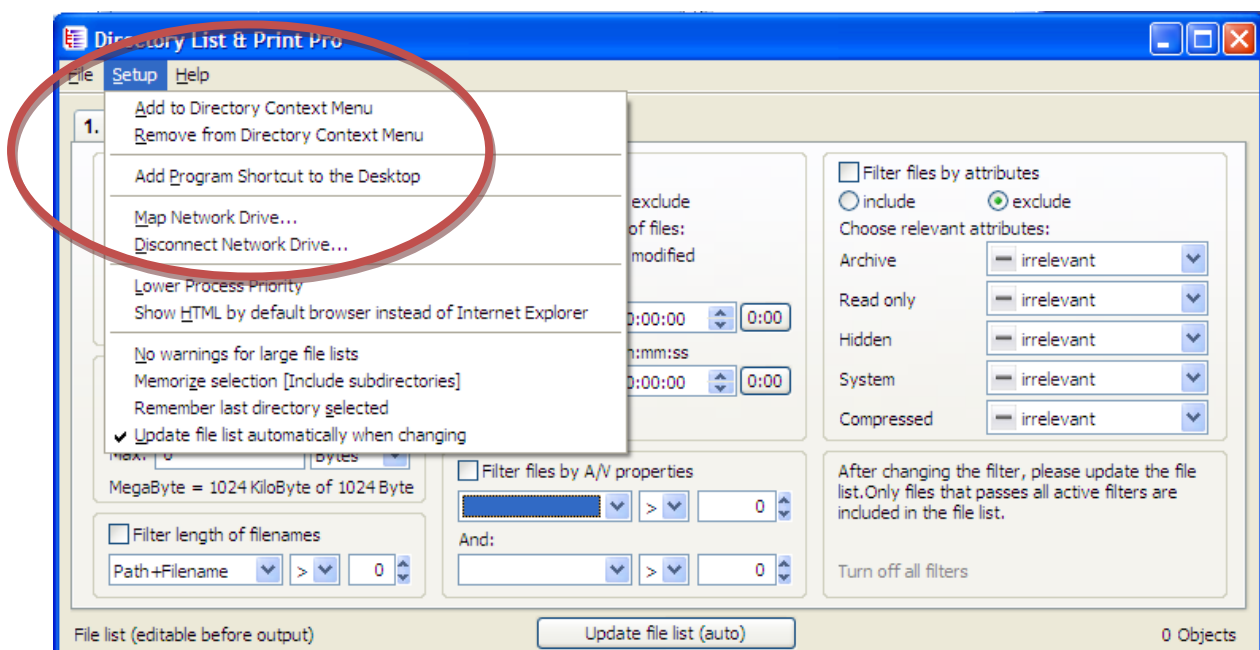
Should this not be possible you can output the listing to the Clipboard and paste it to Word.

## Drag & Drop function from Windows Explorer

With the Drag & Drop function from the Windows Explorer you can select a requested directory and drag the opened application directly to Directory List & Print. The selected directory will then directly be opened in Directory List & Print for further output and printing options.

## Directory List & Print in the context menu Windows Explorer

Directory List & Print can directly be embedded in the context menu of Windows Explorer in order to display directly the desired directory. Simply select in the top left in the menu "Setup" the option "Add to Directory Context Menu".



## With which character sets does Directory List & Print work?

Directory List & Print works with all Western Latin character sets. Languages with Asian characters are not supported.

## Language versions of Directory List & Print

Directory List & Print is available for download in the following language versions:

English <http://www.infonautics-software.ch/downloads/DirectoryListPrintEN.zip>

German <http://www.infonautics-software.ch/downloads/DirectoryListPrintDE.zip>

French <http://www.infonautics-software.ch/downloads/DirectoryListPrintFR.zip>

Italian <http://www.infonautics-software.ch/downloads/DirectoryListPrintIT.zip>

Dutch <http://www.infonautics-software.ch/downloads/DirectoryListPrintNL.zip>

Portuguese <http://www.infonautics-software.ch/downloads/DirectoryListPrintBR.zip>

## Enter licence key

After your purchase of the Pro version you will receive an email confirmation including the licence key in order to activate the Pro version. Copy the in the email included licence key, consisting of several lines, into the appropriate field under the tab "Pro Licence". The upgrade from the free to the Pro version including numerous additional functions takes place immediately after having clicked on the button "Activate Licence" and having restarted the program.

## Support

Please visit our [blog page](#) providing helpful advice regarding basic features and [video tutorials](#). In case of any questions please contact us at [support@infonautics.ch](mailto:support@infonautics.ch). INFONAUTICS GmbH will answer your questions by email in English and German within 48 hours. INFONAUTICS GmbH is based in Switzerland. Please consider possible time differences.

## Do you have any suggestions or requests regarding the further development of Directory List & Print Pro?

We look forward to receiving your suggestions as well as possible criticism at [development@infonautics.ch](mailto:development@infonautics.ch).

## Contact

INFONAUTICS GmbH

Eichholzweg 16

6312 Steinhausen

Switzerland

Phone +41-4174301001

Email [infonautics@infonautics.ch](mailto:infonautics@infonautics.ch)

Facebook <https://www.facebook.com/InfonauticsGmbH/>

LinkedIn <https://www.linkedin.com/company/infonautics-gmbh>

Youtube <https://www.youtube.com/user/Infonautics>

Google+ <http://www.google.com/+InfonauticsCh>